

# Granzyme B Polyclonal Antibody

Catalog # AP74319

## Product Information

Application	WB, IHC-P
Primary Accession	<a href="#">P10144</a>
Reactivity	Human, Mouse, Rat
Host	Rabbit
Clonality	Polyclonal
Calculated MW	27716

## Additional Information

Gene ID	3002
Other Names	Granzyme B (EC 3.4.21.79) (C11) (CTLA-1) (Cathepsin G-like 1) (CTSG1) (Cytotoxic T-lymphocyte proteinase 2) (Lymphocyte protease) (Fragmentin-2) (Granzyme-2) (Human lymphocyte protein) (HLP) (SECT) (T-cell serine protease 1-3E)
Dilution	WB~~1:1000 IHC-P~~N/A
Format	Liquid in PBS containing 50% glycerol, 0.5% BSA and 0.09% (W/V) sodium azide.
Storage Conditions	-20°C

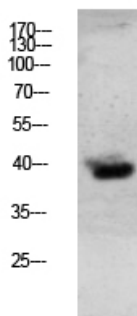
## Protein Information

Name	GZMB {ECO:0000303   PubMed:32188940, ECO:0000312   HGNC:HGNC:4709}
Function	Abundant protease in the cytosolic granules of cytotoxic T- cells and NK-cells which activates caspase-independent pyroptosis when delivered into the target cell through the immunological synapse (PubMed: <a href="#">1985927</a> , PubMed: <a href="#">3262682</a> , PubMed: <a href="#">3263427</a> ). It cleaves after Asp (PubMed: <a href="#">1985927</a> , PubMed: <a href="#">8258716</a> ). Once delivered into the target cell, acts by catalyzing cleavage of gasdermin-E (GSDME), releasing the pore- forming moiety of GSDME, thereby triggering pyroptosis and target cell death (PubMed: <a href="#">31953257</a> , PubMed: <a href="#">32188940</a> ). Seems to be linked to an activation cascade of caspases (aspartate-specific cysteine proteases) responsible for apoptosis execution. Cleaves caspase-3, -9 and -10 (CASP3, CASP9 and CASP10, respectively) to give rise to active enzymes mediating apoptosis (PubMed: <a href="#">9852092</a> ). Cleaves and activates CASP7 in response to bacterial infection, promoting plasma membrane repair (By similarity).
Cellular Location	Secreted. Cytolytic granule. Note=Delivered into the target cell by perforin (PubMed:20038786).

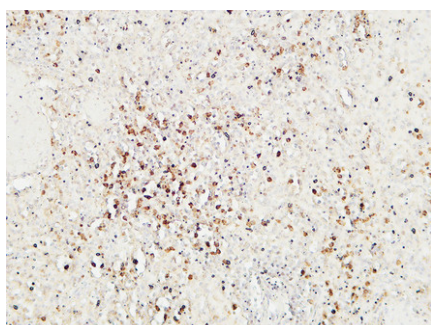
## Background

This enzyme is necessary for target cell lysis in cell-mediated immune responses. It cleaves after Asp. Seems to be linked to an activation cascade of caspases (aspartate-specific cysteine proteases) responsible for apoptosis execution. Cleaves caspase-3, -7, -9 and 10 to give rise to active enzymes mediating apoptosis.

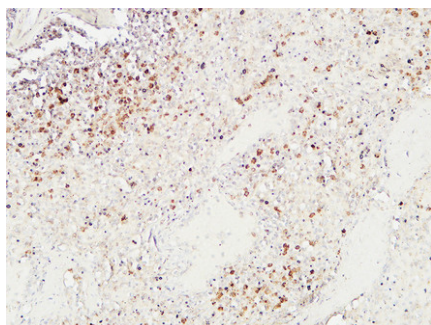
## Images



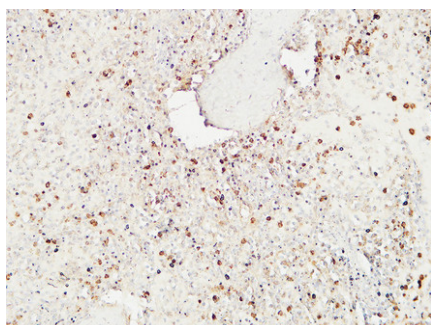
Western blot analysis of mouse-lung lysate, antibody was diluted at 1000. Secondary antibody was diluted at 1:20000



Immunohistochemical analysis of paraffin-embedded Human spleen. 1, Antibody was diluted at 1:200(4°,overnight). 2, High-pressure and temperature EDTA, pH8.0 was used for antigen retrieval. 3,Secondary antibody was diluted at 1:200(room temperature, 30min).



Immunohistochemical analysis of paraffin-embedded Human spleen. 1, Antibody was diluted at 1:200(4°,overnight). 2, High-pressure and temperature EDTA, pH8.0 was used for antigen retrieval. 3,Secondary antibody was diluted at 1:200(room temperature, 30min).



Immunohistochemical analysis of paraffin-embedded Human spleen. 1, Antibody was diluted at 1:200(4°,overnight). 2, High-pressure and temperature EDTA, pH8.0 was used for antigen retrieval. 3,Secondary antibody was diluted at 1:200(room temperature, 30min).

Please note: All products are 'FOR RESEARCH USE ONLY. NOT FOR USE IN DIAGNOSTIC OR THERAPEUTIC PROCEDURES'.