

# Collagen XI $\alpha$ 1 Polyclonal Antibody

Catalog # AP74327

## Product Information

---

Application	WB
Primary Accession	<a href="#">P12107</a>
Reactivity	Human, Mouse, Rat
Host	Rabbit
Clonality	Polyclonal
Calculated MW	181065

## Additional Information

---

Gene ID	1301
Other Names	Collagen alpha-1(XI) chain
Dilution	WB~~WB 1:500-2000, ELISA 1:10000-20000
Format	Liquid in PBS containing 50% glycerol, 0.5% BSA and 0.09% (W/V) sodium azide.
Storage Conditions	-20°C

## Protein Information

---

Name	COL11A1
Synonyms	COLL6
Function	May play an important role in fibrillogenesis by controlling lateral growth of collagen II fibrils.
Cellular Location	Secreted, extracellular space, extracellular matrix {ECO:0000255 PROSITE-ProRule:PRU00793}
Tissue Location	Cartilage, placenta and some tumor or virally transformed cell lines. Isoforms using exon IIA or IIB are found in the cartilage while isoforms using only exon IIB are found in the tendon

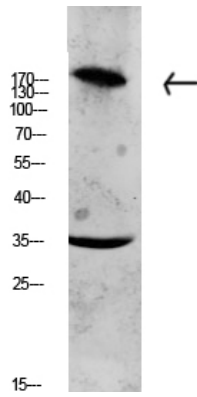
## Background

---

May play an important role in fibrillogenesis by controlling lateral growth of collagen II fibrils.

## Images

---



Western blot analysis of CACO2 lysate, antibody was diluted at 1000. Secondary antibody was diluted at 1:20000

Please note: All products are 'FOR RESEARCH USE ONLY. NOT FOR USE IN DIAGNOSTIC OR THERAPEUTIC PROCEDURES'.