

# MOT4 Polyclonal Antibody

Catalog # AP74332

## Product Information

---

Application	WB
Primary Accession	<a href="#">O15427</a>
Reactivity	Human, Mouse, Rat
Host	Rabbit
Clonality	Polyclonal
Calculated MW	49469

## Additional Information

---

Gene ID	9123
Other Names	Monocarboxylate transporter 4 (MCT 4) (Solute carrier family 16 member 3)
Dilution	WB~~WB 1:500-2000, ELISA 1:10000-20000
Format	Liquid in PBS containing 50% glycerol, 0.5% BSA and 0.09% (W/V) sodium azide.
Storage Conditions	-20°C

## Protein Information

---

Name	SLC16A3
Synonyms	MCT3 {ECO:0000303   PubMed:9425115}, MCT4
Function	Proton-dependent transporter of monocarboxylates such as L- lactate and pyruvate (PubMed: <a href="#">11101640</a> , PubMed: <a href="#">23935841</a> , PubMed: <a href="#">31719150</a> ). Plays a predominant role in L-lactate efflux from highly glycolytic cells (By similarity).
Cellular Location	Cell membrane; Multi-pass membrane protein. Basolateral cell membrane; Multi-pass membrane protein. Note=Plasma membrane localization is dependent upon the BSG/MCT4 interaction (PubMed:10921872). Basolateral sorting signals (BLSS) in C-terminal cytoplasmic tail ensure its basolateral expression in polarised epithelial cells (PubMed:21199217)
Tissue Location	Highly expressed in skeletal muscle.

## Background

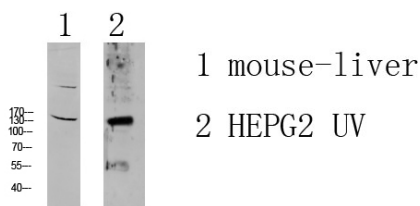
---

Proton-linked monocarboxylate transporter. Catalyzes the rapid transport across the plasma membrane of many monocarboxylates such as lactate, pyruvate, branched-chain oxo acids derived from leucine, valine

and isoleucine, and the ketone bodies acetoacetate, beta-hydroxybutyrate and acetate (By similarity).

Images

---



Western blot analysis of various lysate, antibody was diluted at 1000. Secondary antibody was diluted at 1:20000

Please note: All products are 'FOR RESEARCH USE ONLY. NOT FOR USE IN DIAGNOSTIC OR THERAPEUTIC PROCEDURES'.