

# MYBPC3 Polyclonal Antibody

Catalog # AP74333

## Product Information

---

Application	WB
Primary Accession	<a href="#">Q14896</a>
Reactivity	Human, Mouse, Rat
Host	Rabbit
Clonality	Polyclonal
Calculated MW	140762

## Additional Information

---

Gene ID	4607
Other Names	Myosin-binding protein C, cardiac-type (Cardiac MyBP-C) (C-protein, cardiac muscle isoform)
Dilution	WB~~WB 1:500-2000, ELISA 1:10000-20000
Format	Liquid in PBS containing 50% glycerol, 0.5% BSA and 0.09% (W/V) sodium azide.
Storage Conditions	-20°C

## Protein Information

---

Name	MYBPC3
Function	Thick filament-associated protein located in the crossbridge region of vertebrate striated muscle a bands. In vitro it binds MHC, F- actin and native thin filaments, and modifies the activity of actin- activated myosin ATPase. It may modulate muscle contraction or may play a more structural role.

## Background

---

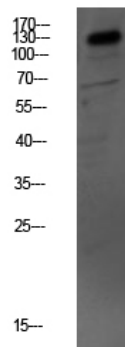
Thick filament-associated protein located in the crossbridge region of vertebrate striated muscle a bands. In vitro it binds MHC, F-actin and native thin filaments, and modifies the activity of actin-activated myosin ATPase. It may modulate muscle contraction or may play a more structural role.

## Images

---

Western blot analysis of mouse-kidney lysate, antibody was diluted at 1000. Secondary antibody was diluted at

1:20000



Please note: All products are 'FOR RESEARCH USE ONLY. NOT FOR USE IN DIAGNOSTIC OR THERAPEUTIC PROCEDURES'.