

# AGTR1 Polyclonal Antibody

Catalog # AP74339

## Product Information

---

Application	WB
Primary Accession	<a href="#">P30556</a>
Reactivity	Human, Mouse, Rat
Host	Rabbit
Clonality	Polyclonal
Calculated MW	41061

## Additional Information

---

Gene ID	185
Other Names	Type-1 angiotensin II receptor (AT1AR) (AT1BR) (Angiotensin II type-1 receptor) (AT1)
Dilution	WB~~WB 1:500-2000, ELISA 1:10000-20000
Format	Liquid in PBS containing 50% glycerol, 0.5% BSA and 0.09% (W/V) sodium azide.
Storage Conditions	-20°C

## Protein Information

---

Name	AGTR1 ( <a href="#">HGNC:336</a> )
Function	Receptor for angiotensin II, a vasoconstricting peptide, which acts as a key regulator of blood pressure and sodium retention by the kidney (PubMed: <a href="#">15611106</a> , PubMed: <a href="#">1567413</a> , PubMed: <a href="#">25913193</a> , PubMed: <a href="#">26420482</a> , PubMed: <a href="#">30639100</a> , PubMed: <a href="#">32079768</a> , PubMed: <a href="#">8987975</a> ). The activated receptor in turn couples to G-alpha proteins G(q) (GNAQ, GNA11, GNA14 or GNA15) and thus activates phospholipase C and increases the cytosolic Ca(2+) concentrations, which in turn triggers cellular responses such as stimulation of protein kinase C (PubMed: <a href="#">15611106</a> ).
Cellular Location	Cell membrane; Multi-pass membrane protein
Tissue Location	Liver, lung, adrenal and adrenocortical adenomas.

## Background

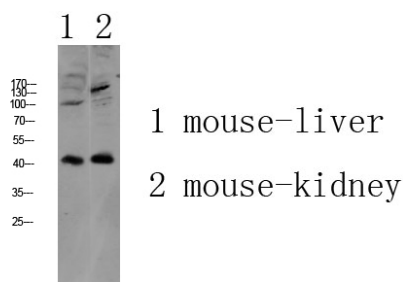
---

Receptor for angiotensin II. Mediates its action by association with G proteins that activate a

phosphatidylinositol- calcium second messenger system.

Images

---



Western blot analysis of various lysate, antibody was diluted at 1000. Secondary antibody was diluted at 1:20000

Please note: All products are 'FOR RESEARCH USE ONLY. NOT FOR USE IN DIAGNOSTIC OR THERAPEUTIC PROCEDURES'.