

LSHR Polyclonal Antibody

Catalog # AP74341

Product Information

Application	WB
Primary Accession	P22888
Reactivity	Human, Mouse, Rat
Host	Rabbit
Clonality	Polyclonal
Calculated MW	78643

Additional Information

Gene ID	3973
Other Names	Lutropin-choriogonadotropic hormone receptor (LH/CG-R) (Luteinizing hormone receptor) (LHR) (LSH-R)
Dilution	WB~~WB 1:500-2000, ELISA 1:10000-20000
Format	Liquid in PBS containing 50% glycerol, 0.5% BSA and 0.09% (W/V) sodium azide.
Storage Conditions	-20°C

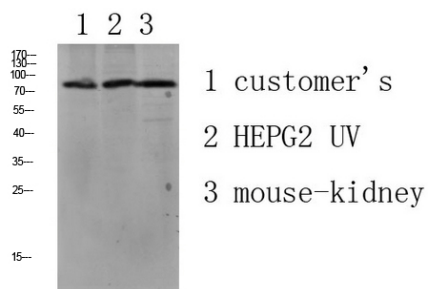
Protein Information

Name	LHCGR
Synonyms	LCGR, LGR2, LHRHR
Function	Receptor for lutropin-choriogonadotropic hormone (PubMed: 11847099). The activity of this receptor is mediated by G proteins which activate adenylate cyclase (PubMed: 11847099).
Cellular Location	Cell membrane; Multi-pass membrane protein
Tissue Location	Gonadal and thyroid cells.

Background

Receptor for lutropin-choriogonadotropic hormone (PubMed: [11847099](#)). The activity of this receptor is mediated by G proteins which activate adenylate cyclase (PubMed:[11847099](#)).

Images



Western blot analysis of various lysate, antibody was diluted at 1000. Secondary antibody was diluted at 1:20000

Please note: All products are 'FOR RESEARCH USE ONLY. NOT FOR USE IN DIAGNOSTIC OR THERAPEUTIC PROCEDURES'.