

Flotillin-1 Polyclonal Antibody

Catalog # AP74473

Product Information

Application	WB, E
Primary Accession	O75955
Reactivity	Human, Mouse, Rat
Host	Rabbit
Clonality	Polyclonal
Calculated MW	47355

Additional Information

Gene ID	10211
Other Names	Flotillin-1
Dilution	WB~~WB 1:500-2000, ELISA(peptide)1:5000-20000 E~~N/A
Format	Liquid in PBS containing 50% glycerol, 0.5% BSA and 0.09% (W/V) sodium azide.
Storage Conditions	-20°C

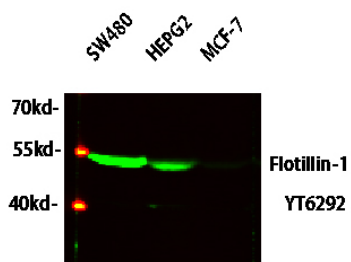
Protein Information

Name	FLOT1
Function	May act as a scaffolding protein within caveolar membranes, functionally participating in formation of caveolae or caveolae-like vesicles.
Cellular Location	Cell membrane; Peripheral membrane protein. Endosome Membrane, caveola {ECO:0000250 UniProtKB:O08917}; Peripheral membrane protein {ECO:0000250 UniProtKB:O08917}. Melanosome. Membrane raft. Note=Identified by mass spectrometry in melanosome fractions from stage I to stage IV (PubMed:17081065) Membrane-associated protein of caveola (By similarity) {ECO:0000250 UniProtKB:O08917, ECO:0000269 PubMed:17081065}

Background

May act as a scaffolding protein within caveolar membranes, functionally participating in formation of caveolae or caveolae-like vesicles.

Images



Western blot analysis of various lysates, primary antibody was diluted at 1:1000, 4° over night, secondary antibody(cat : RS23920)was diluted at 1:10000, 37° 1hour.

Please note: All products are 'FOR RESEARCH USE ONLY. NOT FOR USE IN DIAGNOSTIC OR THERAPEUTIC PROCEDURES'.