

SERPINA4 Antibody (C-term)

Purified Rabbit Polyclonal Antibody (Pab)

Catalog # AP7455b

Product Information

Application	WB, IHC-P, FC, E
Primary Accession	P29622
Reactivity	Human
Host	Rabbit
Clonality	Polyclonal
Isotype	Rabbit IgG
Clone Names	RB18485
Calculated MW	48542
Antigen Region	291-320

Additional Information

Gene ID	5267
Other Names	Kallistatin, Kallikrein inhibitor, Peptidase inhibitor 4, PI-4, Serpin A4, SERPINA4, KST, PI4
Target/Specificity	This SERPINA4 antibody is generated from rabbits immunized with a KLH conjugated synthetic peptide between 291-320 amino acids from the C-terminal region of human SERPINA4.
Dilution	WB~~1:1000 IHC-P~~1:100~500 FC~~1:10~50 E~~Use at an assay dependent concentration.
Format	Purified polyclonal antibody supplied in PBS with 0.09% (W/V) sodium azide. This antibody is prepared by Saturated Ammonium Sulfate (SAS) precipitation followed by dialysis against PBS.
Storage	Maintain refrigerated at 2-8°C for up to 2 weeks. For long term storage store at -20°C in small aliquots to prevent freeze-thaw cycles.
Precautions	SERPINA4 Antibody (C-term) is for research use only and not for use in diagnostic or therapeutic procedures.

Protein Information

Name	SERPINA4
Synonyms	KST, PI4
Function	Inhibits human amidolytic and kininogenase activities of tissue kallikrein.

Inhibition is achieved by formation of an equimolar, heat- and SDS-stable complex between the inhibitor and the enzyme, and generation of a small C-terminal fragment of the inhibitor due to cleavage at the reactive site by tissue kallikrein.

Cellular Location

Secreted.

Tissue Location

Expressed by the liver and secreted in plasma.

Background

SERPINA4 inhibits human amidolytic and kininogenase activities of tissue kallikrein. The inhibition is achieved by formation of an equimolar, heat- and SDS-stable complex between the inhibitor and the enzyme, and generation of a small C-terminal fragment of the inhibitor due to cleavage at the reactive site by tissue kallikrein.

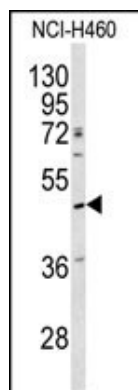
References

Chai K.X., Chen L.-M.J. Biol. Chem. 268:24498-24505(1993)

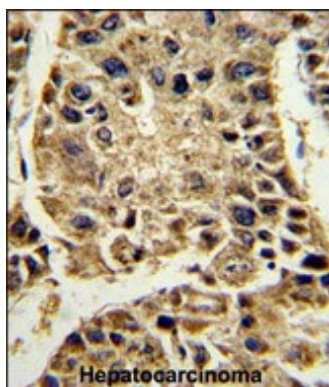
Chai K.X., Ward D.C.Genomics 23:370-378(1994)

Zhou G.X., Chao L.J. Biol. Chem. 267:25873-25880(1992)

Images

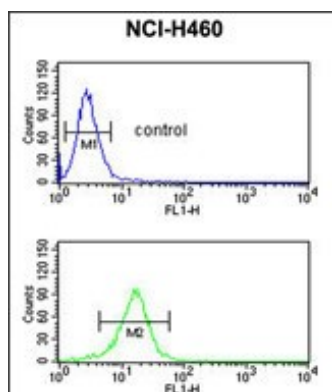


Western blot analysis of SERPINA4 antibody (C-term) (Cat.#AP7455b) in NCI-H460 cell line lysates (35ug/lane). SERPINA4 (arrow) was detected using the purified Pab.



Formalin-fixed and paraffin-embedded human hepatocarcinoma reacted with SERPINA4 Antibody (C-term), which was peroxidase-conjugated to the secondary antibody, followed by DAB staining. This data demonstrates the use of this antibody for immunohistochemistry; clinical relevance has not been evaluated.

SERPINA4 Antibody (C-term) (Cat. #AP7455b) flow cytometric analysis of NCI-H460 cells (bottom histogram) compared to a negative control cell (top histogram).FITC-conjugated goat-anti-rabbit secondary antibodies were used for the analysis.



Please note: All products are 'FOR RESEARCH USE ONLY. NOT FOR USE IN DIAGNOSTIC OR THERAPEUTIC PROCEDURES'.