

EN2 Antibody (C-term)

Purified Rabbit Polyclonal Antibody (Pab)

Catalog # AP7457b

Product Information

| | |
|--------------------------|--|
| Application | IF, WB, E |
| Primary Accession | P19622 |
| Other Accession | P09066 , Q05917 , P52730 , P52729 , P09015 |
| Reactivity | Human, Mouse |
| Predicted | Zebrafish, Xenopus, Chicken |
| Host | Rabbit |
| Clonality | Polyclonal |
| Isotype | Rabbit IgG |
| Clone Names | RB18198 |
| Calculated MW | 34211 |
| Antigen Region | 243-271 |

Additional Information

| | |
|---------------------------|---|
| Gene ID | 2020 |
| Other Names | Homeobox protein engrailed-2, Homeobox protein en-2, Hu-En-2, EN2 |
| Target/Specificity | This EN2 antibody is generated from rabbits immunized with a KLH conjugated synthetic peptide between 243-271 amino acids from the C-terminal region of human EN2. |
| Dilution | IF~~1:10~50 WB~~1:1000 E~~Use at an assay dependent concentration. |
| Format | Purified polyclonal antibody supplied in PBS with 0.09% (W/V) sodium azide. This antibody is prepared by Saturated Ammonium Sulfate (SAS) precipitation followed by dialysis against PBS. |
| Storage | Maintain refrigerated at 2-8°C for up to 2 weeks. For long term storage store at -20°C in small aliquots to prevent freeze-thaw cycles. |
| Precautions | EN2 Antibody (C-term) is for research use only and not for use in diagnostic or therapeutic procedures. |

Protein Information

| | |
|--------------------------|----------|
| Name | EN2 |
| Cellular Location | Nucleus. |

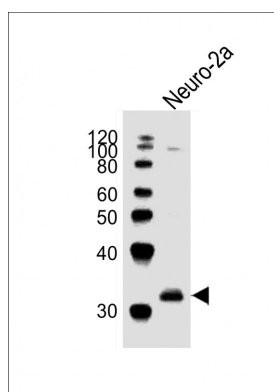
Background

EN2 is thought to have a role in controlling development. In *Drosophila*, the protein plays an important role during development in segmentation, where it is required for the formation of posterior compartments. Different mutations in the mouse homologs, En1 and En2, produced different developmental defects that frequently are lethal. This protein has been implicated in the control of pattern formation during development of the central nervous system.

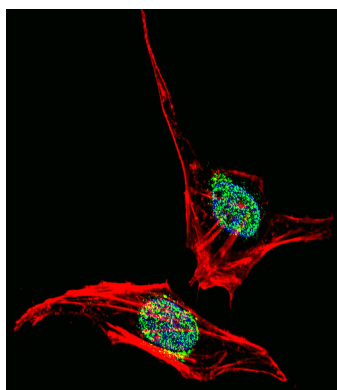
References

Poole S.J., Law M.L. *Genomics* 4:225-231(1989)
Benayed R., Gharani N. *Am. J. Hum. Genet.* 77:851-868(2005)

Images



Anti-EN2 Antibody (C-term) at 1:1000 dilution + Neuro-2a whole cell lysates. Lysates/proteins at 20 µg per lane. Secondary Goat Anti-Rabbit IgG, (H+L), Peroxidase conjugated at 1/10000 dilution. Predicted band size: 34 kDa. Blocking/Dilution buffer: 5% NFDM/TBST.



Fluorescent confocal image of HeLa cells stained with EN2 Antibody (C-term) (Cat#AP7457b). HeLa cells were fixed with 4% PFA (20 min), permeabilized with Triton X-100 (0.1%, 10 min), then incubated with EN2 primary antibody (1:25, 1 h at 37°C). For secondary antibody, Alexa Fluor® 488 conjugated donkey anti-rabbit antibody (green) was used (1:400, 50 min at 37°C). Cytoplasmic actin was counterstained with Alexa Fluor® 555 (red) conjugated Phalloidin (7 units/ml, 1 h at 37°C). Nuclei were counterstained with DAPI (blue) (10 µg/ml, 10 min). EN2 immunoreactivity is localized to nucleus significantly and cytoplasm weakly.

Please note: All products are 'FOR RESEARCH USE ONLY. NOT FOR USE IN DIAGNOSTIC OR THERAPEUTIC PROCEDURES'.