

EN2 Antibody (C-term)

Affinity Purified Rabbit Polyclonal Antibody (Pab)

Catalog # AP7457f

Product Information

Application	WB, IHC-P, FC, E
Primary Accession	P19622
Reactivity	Human, Mouse
Host	Rabbit
Clonality	Polyclonal
Isotype	Rabbit IgG
Clone Names	RB18338
Calculated MW	34211
Antigen Region	243-271

Additional Information

Gene ID	2020
Other Names	Homeobox protein engrailed-2, Homeobox protein en-2, Hu-En-2, EN2
Target/Specificity	This EN2 antibody is generated from rabbits immunized with a KLH conjugated synthetic peptide between 243-271 amino acids from the C-terminal region of human EN2.
Dilution	WB~~1:1000 IHC-P~~1:100~500 FC~~1:10~50 E~~Use at an assay dependent concentration.
Format	Purified polyclonal antibody supplied in PBS with 0.09% (W/V) sodium azide. This antibody is purified through a protein A column, followed by peptide affinity purification.
Storage	Maintain refrigerated at 2-8°C for up to 2 weeks. For long term storage store at -20°C in small aliquots to prevent freeze-thaw cycles.
Precautions	EN2 Antibody (C-term) is for research use only and not for use in diagnostic or therapeutic procedures.

Protein Information

Name	EN2
Cellular Location	Nucleus.

Background

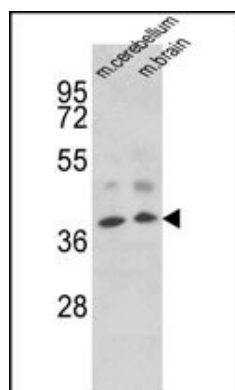
EN2 is thought to have a role in controlling development. In *Drosophila*, the protein plays an important role during development in segmentation, where it is required for the formation of posterior compartments. Different mutations in the mouse homologs, En1 and En2, produced different developmental defects that frequently are lethal. This protein has been implicated in the control of pattern formation during development of the central nervous system.

References

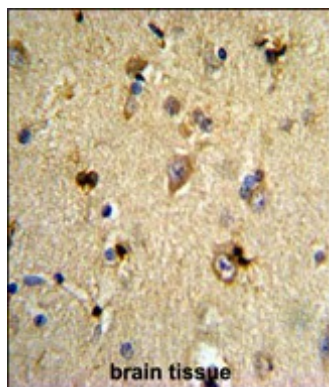
Poole S.J., Law M.L. *Genomics* 4:225-231(1989)

Benayed R., Gharani N. *Am. J. Hum. Genet.* 77:851-868(2005)

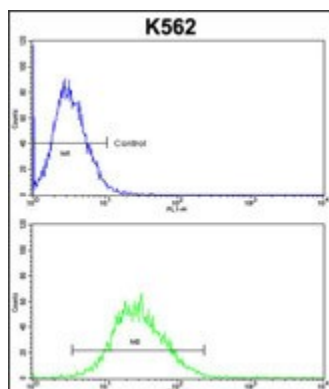
Images



Western blot analysis of EN2 Antibody (C-term) (Cat. #AP7457f) in mouse cerebellum, brain tissue lysates (35ug/lane). EN2 (arrow) was detected using the purified Pab.



Formalin-fixed and paraffin-embedded human brain tissue reacted with EN2 Antibody (C-term), which was peroxidase-conjugated to the secondary antibody, followed by DAB staining. This data demonstrates the use of this antibody for immunohistochemistry; clinical relevance has not been evaluated.



EN2 Antibody (C-term) (Cat. #AP7457f) flow cytometric analysis of k562 cells (bottom histogram) compared to a negative control cell (top histogram). FITC-conjugated goat-anti-rabbit secondary antibodies were used for the analysis.

Please note: All products are 'FOR RESEARCH USE ONLY. NOT FOR USE IN DIAGNOSTIC OR THERAPEUTIC PROCEDURES'.