

# GPT Antibody (N-term R133)

Purified Rabbit Polyclonal Antibody (Pab)

Catalog # AP7468b

## Product Information

---

<b>Application</b>	WB, IHC-P, E
<b>Primary Accession</b>	<a href="#">P24298</a>
<b>Other Accession</b>	<a href="#">A4IFH5</a>
<b>Reactivity</b>	Human, Rat, Mouse
<b>Predicted</b>	Bovine
<b>Host</b>	Rabbit
<b>Clonality</b>	Polyclonal
<b>Isotype</b>	Rabbit IgG
<b>Calculated MW</b>	54637
<b>Antigen Region</b>	118-144

## Additional Information

---

<b>Gene ID</b>	2875
<b>Other Names</b>	Alanine aminotransferase 1, ALT1, Glutamate pyruvate transaminase 1, GPT 1, Glutamic--alanine transaminase 1, Glutamic--pyruvic transaminase 1, GPT, AAT1, GPT1
<b>Target/Specificity</b>	This GPT antibody is generated from rabbits immunized with a KLH conjugated synthetic peptide between 118-144 amino acids from the N-terminal region of human GPT.
<b>Dilution</b>	WB~~1:1000 IHC-P~~1:100 E~~Use at an assay dependent concentration.
<b>Format</b>	Purified polyclonal antibody supplied in PBS with 0.09% (W/V) sodium azide. This antibody is prepared by Saturated Ammonium Sulfate (SAS) precipitation followed by dialysis against PBS.
<b>Storage</b>	Maintain refrigerated at 2-8°C for up to 2 weeks. For long term storage store at -20°C in small aliquots to prevent freeze-thaw cycles.
<b>Precautions</b>	GPT Antibody (N-term R133) is for research use only and not for use in diagnostic or therapeutic procedures.

## Protein Information

---

<b>Name</b>	GPT
<b>Synonyms</b>	AAT1, GPT1

<b>Function</b>	Catalyzes the reversible transamination between alanine and 2-oxoglutarate to form pyruvate and glutamate. Participates in cellular nitrogen metabolism and also in liver gluconeogenesis starting with precursors transported from skeletal muscles (By similarity).
<b>Cellular Location</b>	Cytoplasm.
<b>Tissue Location</b>	Liver, kidney, heart, and skeletal muscles. Expressed at moderate levels in the adipose tissue

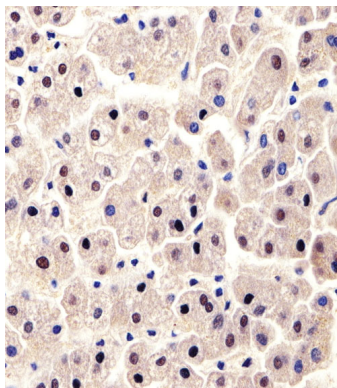
## Background

GPT(Glutamate-pyruvate transaminase), also known as alanine aminotransferase, catalyzes the reversible conversion of L-alanine and alpha-ketoglutarate to L-glutamate and pyruvate. This protein has 2 distinct molecular and genetic forms: one cytoplasmic (soluble) (GPT1) and one mitochondrial (GPT2). See ALTQTL1 and ALTQTL2 for information on quantitative trait loci influencing the plasma level of alanine aminotransferase.

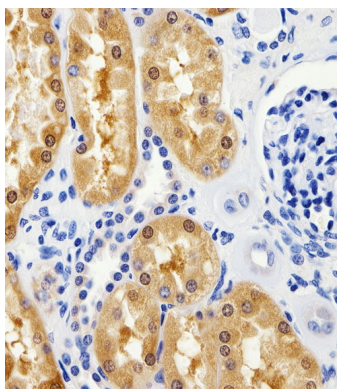
## References

Yang R.-Z., Blaileanu G.Genomics 79:445-450(2002)  
Ishiguro M., Takio K.Biochemistry 30:10451-10457(1991)

## Images

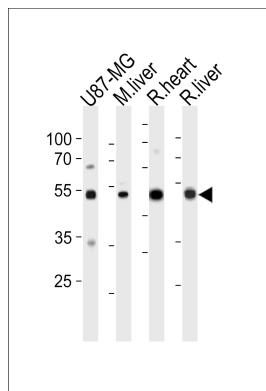


Immunohistochemical analysis of paraffin-embedded H.liver section using GPT Antibody (N-term R133)(Cat#AP7468b). AP7468b was diluted at 1:100 dilution. A peroxidase-conjugated goat anti-rabbit IgG at 1:400 dilution was used as the secondary antibody, followed by DAB staining.



Immunohistochemical analysis of paraffin-embedded H.kidney section using GPT Antibody (N-term R133)(Cat#AP7468b). AP7468b was diluted at 1:100 dilution. A peroxidase-conjugated goat anti-rabbit IgG at 1:400 dilution was used as the secondary antibody, followed by DAB staining.

GPT Antibody (N-term R133) (Cat. #AP7468b) western blot analysis in U87-MG cell line , mouse liver ,and rat heart and liver tissue lysates (35ug/lane).This demonstrates the GPT antibody detected the GPT protein (arrow).



## Citations

---

- [Liver alanine catabolism promotes skeletal muscle atrophy and hyperglycaemia in type 2 diabetes.](#)

Please note: All products are 'FOR RESEARCH USE ONLY. NOT FOR USE IN DIAGNOSTIC OR THERAPEUTIC PROCEDURES'.