

OPLAH Antibody (N-term)

Purified Rabbit Polyclonal Antibody (Pab)

Catalog # AP7475a

Product Information

Application	WB, IHC-P, E
Primary Accession	O14841
Other Accession	P97608
Reactivity	Human, Mouse
Predicted	Rat
Host	Rabbit
Clonality	Polyclonal
Isotype	Rabbit IgG
Clone Names	RB18531
Calculated MW	137457
Antigen Region	1-30

Additional Information

Gene ID	26873
Other Names	5-oxoprolinase, 5-oxo-L-prolinase, 5-OPase, Pyroglutamase, OPLAH
Target/Specificity	This OPLAH antibody is generated from rabbits immunized with a KLH conjugated synthetic peptide between 1-30 amino acids from the N-terminal region of human OPLAH.
Dilution	WB~~1:1000 IHC-P~~1:100~500 E~~Use at an assay dependent concentration.
Format	Purified polyclonal antibody supplied in PBS with 0.09% (W/V) sodium azide. This antibody is prepared by Saturated Ammonium Sulfate (SAS) precipitation followed by dialysis against PBS.
Storage	Maintain refrigerated at 2-8°C for up to 2 weeks. For long term storage store at -20°C in small aliquots to prevent freeze-thaw cycles.
Precautions	OPLAH Antibody (N-term) is for research use only and not for use in diagnostic or therapeutic procedures.

Protein Information

Name	OPLAH (HGNC:8149)
Function	Catalyzes the cleavage of 5-oxo-L-proline to form L-glutamate coupled to the hydrolysis of ATP to ADP and inorganic phosphate.

Background

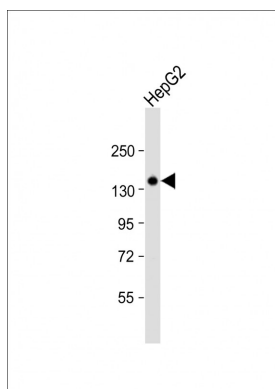
OPLAH catalyzes the cleavage of 5-oxo-L-proline to form L-glutamate coupled to the hydrolysis of ATP to ADP and inorganic phosphate. $\text{ATP} + 5\text{-oxo-L-proline} + 2 \text{H}_2\text{O} = \text{ADP} + \text{phosphate} + \text{L-glutamate}$.

References

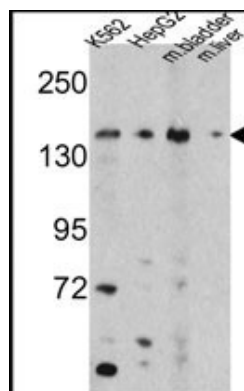
Watanabe T., Abe K. *Biol. Pharm. Bull.* 27:288-294(2004)

Bechtel S., Rosenfelder H. *BMC Genomics* 8:399-399(2007)

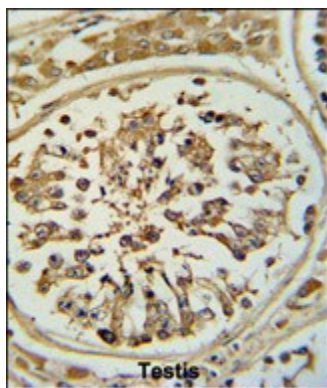
Images



Anti-OPLAH Antibody (N-term) at 1:1000 dilution + HepG2 whole cell lysates/proteins at 20 µg per lane. Secondary Goat Anti-Rabbit IgG, (H+L), Peroxidase conjugated at 1/10000 dilution. Predicted band size : 137 kDa Blocking/Dilution buffer: 5% NFDM/TBST.



Western blot analysis of OPLAH Antibody (N-term) (Cat.#AP7475a) in K562, HepG2 cell line lysates and mouse bladder, liver tissue lysates (35ug/lane). OPLAH (arrow) was detected using the purified Pab.



Formalin-fixed and paraffin-embedded human testis tissue reacted with OPLAH Antibody (N-term), which was peroxidase-conjugated to the secondary antibody, followed by DAB staining. This data demonstrates the use of this antibody for immunohistochemistry; clinical relevance has not been evaluated.