

ZNF364 Rabbit mAb

Catalog # AP74824

Product Information

Application	WB
Primary Accession	Q9Y4L5
Reactivity	Human, Rat
Host	Rabbit
Clonality	Monoclonal Antibody
Calculated MW	33703

Additional Information

Gene ID	27246
Other Names	RNF115
Dilution	WB~~1/500-1/1000
Format	Liquid

Protein Information

Name RNF115 ([HGNC:18154](#))

Function E3 ubiquitin-protein ligase that catalyzes the 'Lys- 48'- and/or 'Lys-63'-linked polyubiquitination of various substrates and thereby plays a role in a number of signaling pathways including autophagy, innate immunity, cell proliferation and cell death (PubMed:[20019814](#), PubMed:[30689267](#)). Plays a role in the endosomal trafficking and degradation of membrane receptors including EGFR, FLT3, MET and CXCR4 through their polyubiquitination. Participates together with BST2 in antiviral immunity by facilitating the internalization of HIV-1 virions into intracellular vesicles leading to their lysosomal degradation (PubMed:[20019814](#)). Also possesses an antiviral activity independently of BST2 by promoting retroviral GAG proteins ubiquitination, redistribution to endo-lysosomal compartments and, ultimately, lysosomal degradation (PubMed:[24852021](#)). Catalyzes distinct types of ubiquitination on MAVS and STING1 at different phases of viral infection to promote innate antiviral response (PubMed:[33139700](#)). Mediates the 'Lys-48'-linked ubiquitination of MAVS leading to its proteasomal degradation and ubiquitinates STING1 via 'Lys-63'-linked polyubiquitination, critical for its oligomerization and the subsequent recruitment of TBK1 (PubMed:[33139700](#)). Plays a positive role in the autophagosome-lysosome fusion by interacting with STX17 and enhancing its stability without affecting 'Lys-48'- or 'Lys-63'-linked polyubiquitination levels, which in turn promotes autophagosome maturation (PubMed:[32980859](#)). Negatively regulates TLR-induced expression of proinflammatory cytokines by catalyzing 'Lys-11'-linked ubiquitination of

RAB1A and RAB13 to inhibit post-ER trafficking of TLRs to the Golgi by RAB1A and subsequently from the Golgi apparatus to the cell surface by RAB13 (PubMed:[35343654](#)).

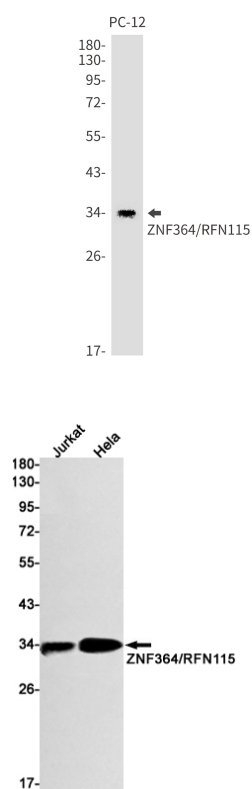
Cellular Location

Cytoplasm. Nucleus Endoplasmic reticulum. Golgi apparatus. Note=The GTP-bound form of RAB7A recruits RNF115 from the cytosol onto late endosomes/lysosomes

Tissue Location

Expressed at extremely low levels in normal breast, prostate, lung, colon. Higher levels of expression are detected in heart, skeletal muscle, testis as well as in breast and prostate cancer cells.

Images



Please note: All products are 'FOR RESEARCH USE ONLY. NOT FOR USE IN DIAGNOSTIC OR THERAPEUTIC PROCEDURES'.