

# ATG13 Rabbit mAb

Catalog # AP74851

## Product Information

---

<b>Application</b>	WB, IP
<b>Primary Accession</b>	<a href="#">O75143</a>
<b>Reactivity</b>	Human, Mouse, Rat
<b>Host</b>	Rabbit
<b>Clonality</b>	Monoclonal Antibody
<b>Calculated MW</b>	56572

## Additional Information

---

<b>Gene ID</b>	9776
<b>Other Names</b>	ATG13
<b>Dilution</b>	WB~~1/500-1/1000 IP~~1/20
<b>Format</b>	50mM Tris-Glycine(pH 7.4), 0.15M NaCl, 40%Glycerol, 0.01% sodium azide and 0.05% BSA.
<b>Storage</b>	Store at 4°C short term. Aliquot and store at -20°C long term. Avoid freeze/thaw cycles.

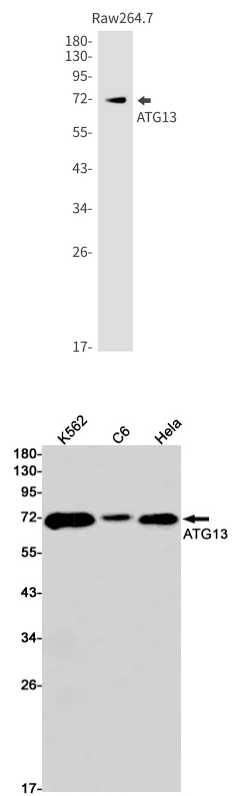
## Protein Information

---

<b>Name</b>	ATG13
<b>Synonyms</b>	KIAA0652
<b>Function</b>	Autophagy factor required for autophagosome formation and mitophagy. Target of the TOR kinase signaling pathway that regulates autophagy through the control of the phosphorylation status of ATG13 and ULK1, and the regulation of the ATG13-ULK1-RB1CC1 complex. Through its regulation of ULK1 activity, plays a role in the regulation of the kinase activity of mTORC1 and cell proliferation.
<b>Cellular Location</b>	Cytoplasm, cytosol. Preautophagosomal structure. Note=Under starvation conditions, is localized to punctate structures primarily representing the isolation membrane; the isolation membrane sequesters a portion of the cytoplasm resulting in autophagosome formation

## Images

---



Please note: All products are 'FOR RESEARCH USE ONLY. NOT FOR USE IN DIAGNOSTIC OR THERAPEUTIC PROCEDURES'.