

# CD13 Rabbit mAb

Catalog # AP74875

## Product Information

---

|                          |                           |
|--------------------------|---------------------------|
| <b>Application</b>       | WB, IHC-P, IHC-F, IP, ICC |
| <b>Primary Accession</b> | <a href="#">P15144</a>    |
| <b>Reactivity</b>        | Human, Rat                |
| <b>Host</b>              | Rabbit                    |
| <b>Clonality</b>         | Monoclonal Antibody       |
| <b>Calculated MW</b>     | 109540                    |

## Additional Information

---

|                    |   |
|--------------------|---|
| <b>Gene ID</b>     | 290   |
| <b>Other Names</b> | ANPEP   |
| <b>Dilution</b>    | WB~~1/500-1/1000 IHC-P~~N/A IHC-F~~N/A IP~~N/A ICC~~N/A |
| <b>Format</b>      | Liquid  |

## Protein Information

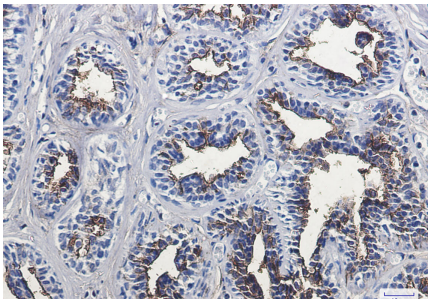
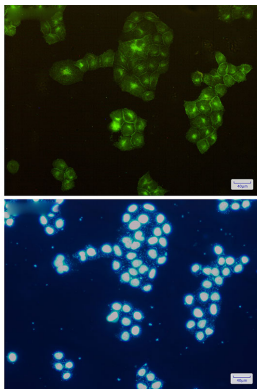
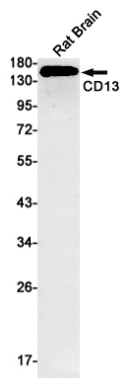
---

|                          |   |
|--------------------------|---|
| <b>Name</b>              | ANPEP   |
| <b>Synonyms</b>          | APN, CD13, PEPN   |
| <b>Function</b>          | Broad specificity aminopeptidase which plays a role in the final digestion of peptides generated from hydrolysis of proteins by gastric and pancreatic proteases. Also involved in the processing of various peptides including peptide hormones, such as angiotensin III and IV, neuropeptides, and chemokines. May also be involved the cleavage of peptides bound to major histocompatibility complex class II molecules of antigen presenting cells. May have a role in angiogenesis and promote cholesterol crystallization. May have a role in amino acid transport by acting as binding partner of amino acid transporter SLC6A19 and regulating its activity (By similarity). |
| <b>Cellular Location</b> | Cell membrane; Single-pass type II membrane protein. Note=Also found as a soluble form  |
| <b>Tissue Location</b>   | Expressed in epithelial cells of the kidney, intestine, and respiratory tract; granulocytes, monocytes, fibroblasts, endothelial cells, cerebral pericytes at the blood-brain barrier, synaptic membranes of cells in the CNS. Also expressed in endometrial stromal cells, but not in the endometrial glandular cells. Found in the vasculature of tissues that undergo angiogenesis and in malignant gliomas and lymph node metastases from multiple tumor types but not in blood vessels of normal tissues. A soluble form has been found in   |

plasma. It is found to be elevated in plasma and effusions of cancer patients.

## Images

---



Please note: All products are 'FOR RESEARCH USE ONLY. NOT FOR USE IN DIAGNOSTIC OR THERAPEUTIC PROCEDURES'.