

# SNX5 Rabbit mAb

Catalog # AP74878

## Product Information

---

Application	WB, IP, ICC
Primary Accession	<a href="#">Q9Y5X3</a>
Reactivity	Human, Mouse, Rat
Host	Rabbit
Clonality	Monoclonal Antibody
Calculated MW	46816

## Additional Information

---

Gene ID	27131
Other Names	SNX5
Dilution	WB~~1/500-1/1000 IP~~1/20 ICC~~N/A
Format	Liquid

## Protein Information

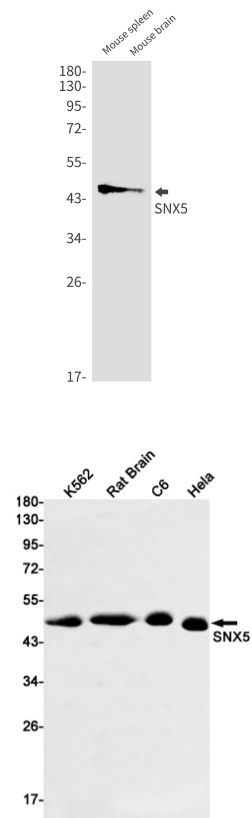
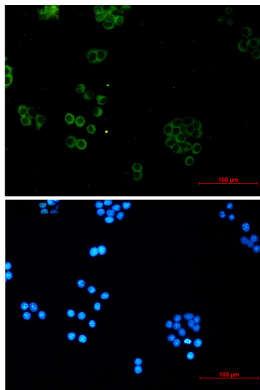
---

Name	SNX5
Function	<p>Involved in several stages of intracellular trafficking. Interacts with membranes containing phosphatidylinositol 3-phosphate (PtdIns(3P)) or phosphatidylinositol 3,4-bisphosphate (PtdIns(3,4)P2) (PubMed:<a href="#">15561769</a>). Acts in part as component of the retromer membrane- deforming SNX-BAR subcomplex. The SNX-BAR retromer mediates retrograde transport of cargo proteins from endosomes to the trans-Golgi network (TGN) and is involved in endosome-to-plasma membrane transport for cargo protein recycling. The SNX-BAR subcomplex functions to deform the donor membrane into a tubular profile called endosome-to-TGN transport carrier (ETC) (Probable). Does not have in vitro vesicle-to-membrane remodeling activity (PubMed:<a href="#">23085988</a>). Involved in retrograde transport of lysosomal enzyme receptor IGF2R (PubMed:<a href="#">17148574</a>, PubMed:<a href="#">18596235</a>). May function as link between endosomal transport vesicles and dynactin (Probable). Plays a role in the internalization of EGFR after EGF stimulation (Probable). Involved in EGFR endosomal sorting and degradation; the function involves PIP5K1C isoform 3 and is retromer- independent (PubMed:<a href="#">23602387</a>). Together with PIP5K1C isoform 3 facilitates HGS interaction with ubiquitinated EGFR, which initiates EGFR sorting to intraluminal vesicles (ILVs) of the multivesicular body for subsequent lysosomal degradation (Probable). Involved in E-cadherin sorting and degradation; inhibits PIP5K1C isoform 3-mediated E-cadherin degradation (PubMed:<a href="#">24610942</a>). Plays a role in macropinocytosis (PubMed:<a href="#">18854019</a>, PubMed:<a href="#">21048941</a>).</p>

**Cellular Location**

Endosome. Early endosome Early endosome membrane; Peripheral membrane protein; Cytoplasmic side. Cell membrane; Peripheral membrane protein; Cytoplasmic side. Cytoplasmic vesicle membrane; Peripheral membrane protein; Cytoplasmic side. Cytoplasm. Cell projection, phagocytic cup. Cell projection, ruffle. Note=Recruited to the plasma membrane after EGF stimulation, which leads to increased levels of phosphatidylinositol 3,4-bisphosphate (PdtIns(3,4)P2) (PubMed:15561769). Detected on macropinosomes (PubMed:16968745, PubMed:21048941). Targeted to membrane ruffles in response to EGFR stimulation.

**Images**



Please note: All products are 'FOR RESEARCH USE ONLY. NOT FOR USE IN DIAGNOSTIC OR THERAPEUTIC PROCEDURES'.