

SLP2 Rabbit mAb

Catalog # AP74881

Product Information

Application	WB, IP, ICC
Primary Accession	Q9UJZ1
Reactivity	Human, Mouse, Rat
Host	Rabbit
Clonality	Monoclonal Antibody
Calculated MW	38534

Additional Information

Gene ID	30968
Other Names	STOML2
Dilution	WB~~1/500-1/1000 IP~~N/A ICC~~N/A
Format	Liquid

Protein Information

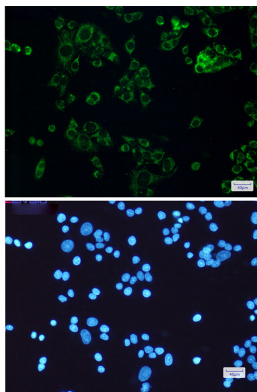
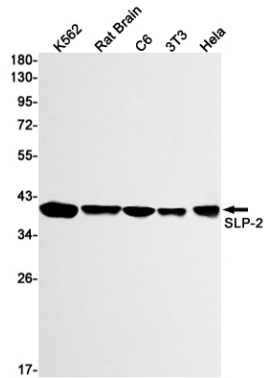
Name	STOML2
Synonyms	SLP2
Function	Mitochondrial protein that probably regulates the biogenesis and the activity of mitochondria. Stimulates cardiolipin biosynthesis, binds cardiolipin-enriched membranes where it recruits and stabilizes some proteins including prohibitin and may therefore act in the organization of functional microdomains in mitochondrial membranes. Through regulation of the mitochondrial function may play a role into several biological processes including cell migration, cell proliferation, T-cell activation, calcium homeostasis and cellular response to stress. May play a role in calcium homeostasis through negative regulation of calcium efflux from mitochondria. Required for mitochondrial hyperfusion a pro-survival cellular response to stress which results in increased ATP production by mitochondria. May also regulate the organization of functional domains at the plasma membrane and play a role in T-cell activation through association with the T- cell receptor signaling complex and its regulation.
Cellular Location	Cell membrane; Peripheral membrane protein. Mitochondrion. Mitochondrion inner membrane; Lipid-anchor. Mitochondrion intermembrane space. Membrane raft. Cytoplasm, cytoskeleton Note=Behaves as an integral membrane protein of the mitochondrion despite the absence of a detectable transmembrane domain (PubMed:21746876).

Also associates with the actin cytoskeleton and membrane rafts in activated T-cells (PubMed:10713127, PubMed:18641330) A minor pool is associated with the plasma membrane and is enriched at the immunological synapse in activated T-cells (PubMed:22623988)

Tissue Location

Ubiquitously expressed at low levels. Expressed in lymphoid tissues (at protein level).

Images



Please note: All products are 'FOR RESEARCH USE ONLY. NOT FOR USE IN DIAGNOSTIC OR THERAPEUTIC PROCEDURES'.