

ASH2L Rabbit mAb

Catalog # AP74882

Product Information

Application	WB, IP, ICC
Primary Accession	Q9UBL3
Reactivity	Human, Rat
Host	Rabbit
Clonality	Monoclonal Antibody
Calculated MW	68723

Additional Information

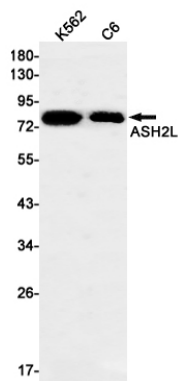
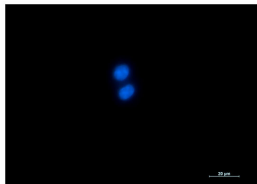
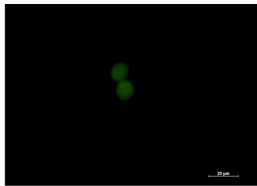
Gene ID	9070
Other Names	ASH2L
Dilution	WB~~1/500-1/1000 IP~~N/A ICC~~N/A
Format	50mM Tris-Glycine(pH 7.4), 0.15M NaCl, 40%Glycerol, 0.01% sodium azide and 0.05% BSA.
Storage	Store at 4°C short term. Aliquot and store at -20°C long term. Avoid freeze/thaw cycles.

Protein Information

Name	ASH2L (HGNC:744)
Synonyms	ASH2L1
Function	Transcriptional regulator (PubMed: 12670868). Component or associated component of some histone methyltransferase complexes which regulates transcription through recruitment of those complexes to gene promoters (PubMed: 19131338). Component of the Set1/Ash2 histone methyltransferase (HMT) complex, a complex that specifically methylates 'Lys-4' of histone H3, but not if the neighboring 'Lys-9' residue is already methylated (PubMed: 19556245). As part of the MLL1/MLL complex it is involved in methylation and dimethylation at 'Lys-4' of histone H3 (PubMed: 19556245). May play a role in hematopoiesis (PubMed: 12670868). In association with RBBP5 and WDR5, stimulates the histone methyltransferase activities of KMT2A, KMT2B, KMT2C, KMT2D, SETD1A and SETD1B (PubMed: 21220120 , PubMed: 22266653).
Cellular Location	Nucleus.
Tissue Location	Ubiquitously expressed. Predominantly expressed in adult heart and testis

and fetal lung and liver, with barely detectable expression in adult lung, liver, kidney, prostate, and peripheral leukocytes.

Images



Please note: All products are 'FOR RESEARCH USE ONLY. NOT FOR USE IN DIAGNOSTIC OR THERAPEUTIC PROCEDURES'.