

Profilin 1 Rabbit mAb

Catalog # AP74920

Product Information

Application	WB, IHC-P, IHC-F, IP, ICC
Primary Accession	P07737
Reactivity	Human, Mouse, Rat
Host	Rabbit
Clonality	Monoclonal Antibody
Calculated MW	15054

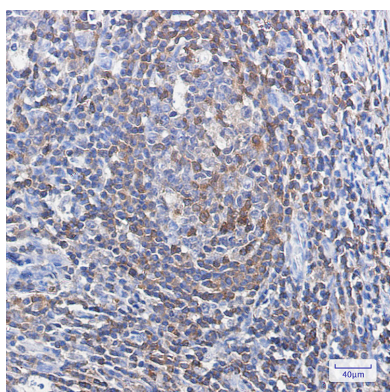
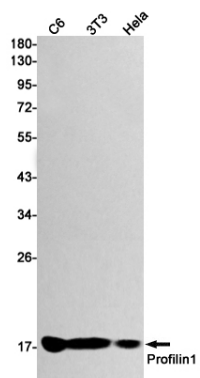
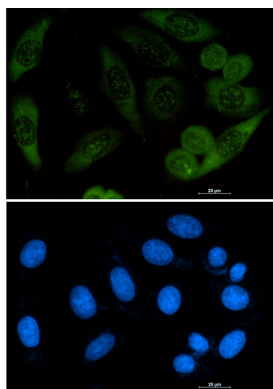
Additional Information

Gene ID	5216
Other Names	PFN1
Dilution	WB~~1/500-1/1000 IHC-P~~N/A IHC-F~~N/A IP~~N/A ICC~~N/A
Format	Liquid

Protein Information

Name	PFN1
Function	Binds to actin and affects the structure of the cytoskeleton. At high concentrations, profilin prevents the polymerization of actin, whereas it enhances it at low concentrations. By binding to PIP2, it inhibits the formation of IP3 and DG. Inhibits androgen receptor (AR) and HTT aggregation and binding of G-actin is essential for its inhibition of AR.
Cellular Location	Cytoplasm, cytoskeleton.
Tissue Location	Expressed in epididymis (at protein level).

Images



Please note: All products are 'FOR RESEARCH USE ONLY. NOT FOR USE IN DIAGNOSTIC OR THERAPEUTIC PROCEDURES'.