

GHRHR Antibody (C-term)

Purified Rabbit Polyclonal Antibody (Pab)

Catalog # AP7494b

Product Information

Application	WB, E
Primary Accession	Q02643
Reactivity	Human
Host	Rabbit
Clonality	Polyclonal
Isotype	Rabbit IgG
Clone Names	RB18122
Calculated MW	47402
Antigen Region	367-397

Additional Information

Gene ID	2692
Other Names	Growth hormone-releasing hormone receptor, GHRH receptor, Growth hormone-releasing factor receptor, GRF receptor, GRFR, GHRHR
Target/Specificity	This GHRHR antibody is generated from rabbits immunized with a KLH conjugated synthetic peptide between 367-397 amino acids from the C-terminal region of human GHRHR.
Dilution	WB~~1:1000 E~~Use at an assay dependent concentration.
Format	Purified polyclonal antibody supplied in PBS with 0.09% (W/V) sodium azide. This antibody is prepared by Saturated Ammonium Sulfate (SAS) precipitation followed by dialysis against PBS.
Storage	Maintain refrigerated at 2-8°C for up to 2 weeks. For long term storage store at -20°C in small aliquots to prevent freeze-thaw cycles.
Precautions	GHRHR Antibody (C-term) is for research use only and not for use in diagnostic or therapeutic procedures.

Protein Information

Name	GHRHR
Function	Receptor for GRF, coupled to G proteins which activate adenylyl cyclase. Stimulates somatotroph cell growth, growth hormone gene transcription and growth hormone secretion.

Cellular Location	Cell membrane; Multi-pass membrane protein.
Tissue Location	Pituitary gland.

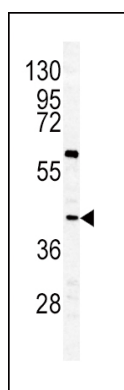
Background

GHRHR is a receptor for growth hormone-releasing hormone. Binding of this hormone to the receptor leads to synthesis and release of growth hormone. Mutations in GHRHR gene have been associated with isolated growth hormone deficiency (IGHD), also known as Dwarfism of Sindh, a disorder characterized by short stature.

References

Johansson,A., Jonasson,I. PLoS ONE 4 (2), E4464 (2009)
 Squire,J., Zhou,A. Genomics 19 (1), 174-175 (1994)

Images



Western blot analysis of GHRHR antibody (C-term) (Cat.#AP7494b) in K562 cell line lysates (35ug/lane). GHRHR (arrow) was detected using the purified Pab.

Please note: All products are 'FOR RESEARCH USE ONLY. NOT FOR USE IN DIAGNOSTIC OR THERAPEUTIC PROCEDURES'.