

# Cytokeratin 10 Rabbit mAb

Catalog # AP74951

## Product Information

---

<b>Application</b>	WB, IHC-P
<b>Primary Accession</b>	<a href="#">P13645</a>
<b>Reactivity</b>	Human, Mouse, Rat, Hamster
<b>Host</b>	Rabbit
<b>Clonality</b>	Monoclonal Antibody
<b>Calculated MW</b>	58827

## Additional Information

---

<b>Gene ID</b>	3858
<b>Other Names</b>	KRT10
<b>Dilution</b>	WB~~1/500-1/1000 IHC-P~~N/A
<b>Format</b>	Liquid

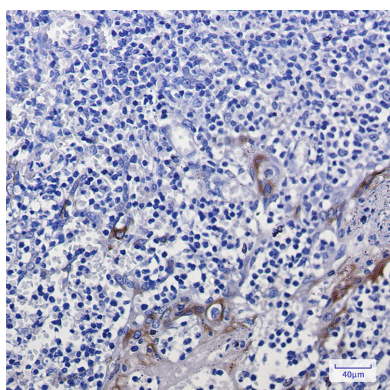
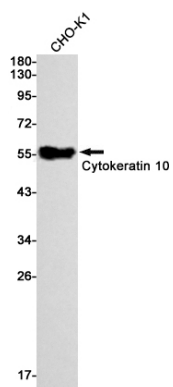
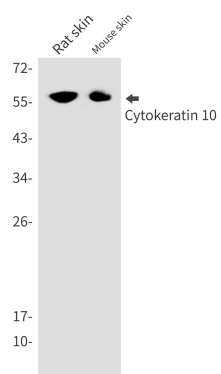
## Protein Information

---

<b>Name</b>	KRT10
<b>Synonyms</b>	KPP
<b>Function</b>	Plays a role in the establishment of the epidermal barrier on plantar skin (By similarity). Involved in the maintenance of cell layer development and keratin filament bundles in suprabasal cells of the epithelium (By similarity).
<b>Cellular Location</b>	Secreted, extracellular space. Cell surface. Cytoplasm
<b>Tissue Location</b>	Seen in all suprabasal cell layers including stratum corneum. Expressed on the surface of lung cell lines (PubMed:19627498). Localized on the surface of desquamated nasal epithelial cells (at protein level) (PubMed:12427098)

## Images

---



Please note: All products are 'FOR RESEARCH USE ONLY. NOT FOR USE IN DIAGNOSTIC OR THERAPEUTIC PROCEDURES'.