

VCAM1 Rabbit mAb

Catalog # AP74993

Product Information

Application	WB, IHC-P, IP
Primary Accession	P19320
Reactivity	Human, Mouse, Rat
Host	Rabbit
Clonality	Monoclonal Antibody
Calculated MW	81276

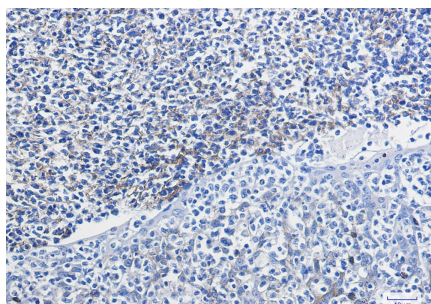
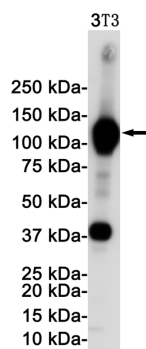
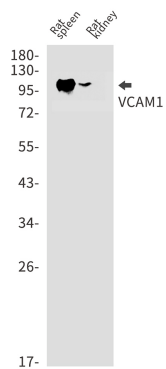
Additional Information

Gene ID	7412
Other Names	VCAM1
Dilution	WB~~1/500-1/1000 IHC-P~~N/A IP~~1/20
Format	50mM Tris-Glycine(pH 7.4), 0.15M NaCl, 40%Glycerol, 0.01% sodium azide and 0.05% BSA.

Protein Information

Name	VCAM1
Function	Cell adhesion glycoprotein predominantly expressed on the surface of endothelial cells that plays an important role in immune surveillance and inflammation (PubMed: 31310649). Acts as a major regulator of leukocyte adhesion to the endothelium through interaction with different types of integrins (PubMed: 10209034). During inflammatory responses, binds ligands on the surface of activated endothelial cells to initiate the activation of calcium channels and the plasma membrane-associated small GTPase RAC1 leading to leukocyte transendothelial migration (PubMed: 22970700). Also serves as a quality- control checkpoint for entry into bone marrow by providing a 'don't- eat-me' stamping in the context of major histocompatibility complex (MHC) class-I presentation (PubMed: 35210567).
Cellular Location	[Vascular cell adhesion protein 1]: Cell membrane; Single-pass type I membrane protein
Tissue Location	Expressed on inflamed vascular endothelium, as well as on macrophage-like and dendritic cell types in both normal and inflamed tissue

Images



Please note: All products are 'FOR RESEARCH USE ONLY. NOT FOR USE IN DIAGNOSTIC OR THERAPEUTIC PROCEDURES'.