

# ENO1 Rabbit mAb

Catalog # AP75001

## Product Information

---

Application	WB, IHC-P, IHC-F, IP, ICC
Primary Accession	<a href="#">P06733</a>
Reactivity	Human, Mouse, Rat
Host	Rabbit
Clonality	Monoclonal Antibody
Calculated MW	47169

## Additional Information

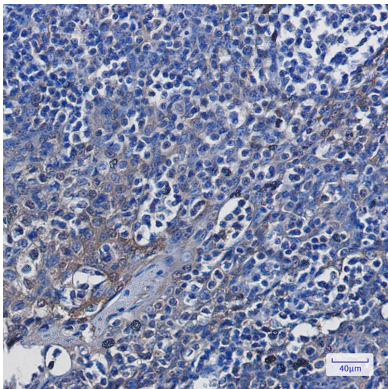
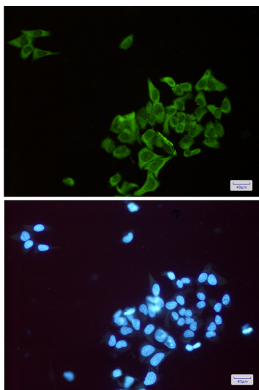
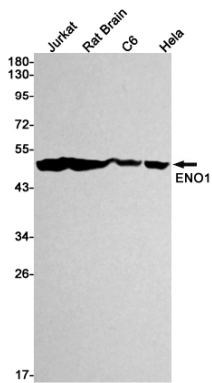
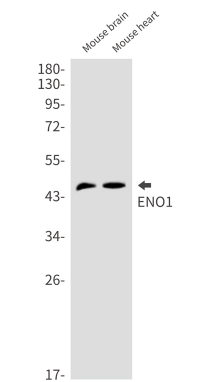
---

Gene ID	2023
Other Names	ENO1
Dilution	WB~~1/500-1/1000 IHC-P~~N/A IHC-F~~N/A IP~~1/20 ICC~~N/A
Format	Liquid

## Protein Information

---

Name	ENO1
Synonyms	ENO1L1, MBPB1, MPB1
Function	Glycolytic enzyme the catalyzes the conversion of 2- phosphoglycerate to phosphoenolpyruvate (PubMed: <a href="#">1369209</a> , PubMed: <a href="#">29775581</a> ). In addition to glycolysis, involved in various processes such as growth control, hypoxia tolerance and allergic responses (PubMed: <a href="#">10802057</a> , PubMed: <a href="#">12666133</a> , PubMed: <a href="#">2005901</a> , PubMed: <a href="#">29775581</a> ). May also function in the intravascular and pericellular fibrinolytic system due to its ability to serve as a receptor and activator of plasminogen on the cell surface of several cell-types such as leukocytes and neurons (PubMed: <a href="#">12666133</a> ). Stimulates immunoglobulin production (PubMed: <a href="#">1369209</a> ).
Cellular Location	Cytoplasm. Cell membrane. Cytoplasm, myofibril, sarcomere, M line. Note=Can translocate to the plasma membrane in either the homodimeric (alpha/alpha) or heterodimeric (alpha/gamma) form. ENO1 is localized to the M line
Tissue Location	The alpha/alpha homodimer is expressed in embryo and in most adult tissues. The alpha/beta heterodimer and the beta/beta homodimer are found in striated muscle, and the alpha/gamma heterodimer and the gamma/gamma homodimer in neurons



Please note: All products are 'FOR RESEARCH USE ONLY. NOT FOR USE IN DIAGNOSTIC OR THERAPEUTIC PROCEDURES'.