

# AAMP Rabbit mAb

Catalog # AP75021

## Product Information

---

<b>Application</b>	WB
<b>Primary Accession</b>	<a href="#">Q13685</a>
<b>Reactivity</b>	Human, Mouse, Rat
<b>Host</b>	Rabbit
<b>Clonality</b>	Monoclonal Antibody
<b>Calculated MW</b>	46751

## Additional Information

---

<b>Gene ID</b>	14
<b>Other Names</b>	AAMP
<b>Dilution</b>	WB~~1/500-1/1000
<b>Format</b>	50mM Tris-Glycine(pH 7.4), 0.15M NaCl, 40%Glycerol, 0.01% sodium azide and 0.05% BSA.
<b>Storage</b>	Store at 4°C short term. Aliquot and store at -20°C long term. Avoid freeze/thaw cycles.

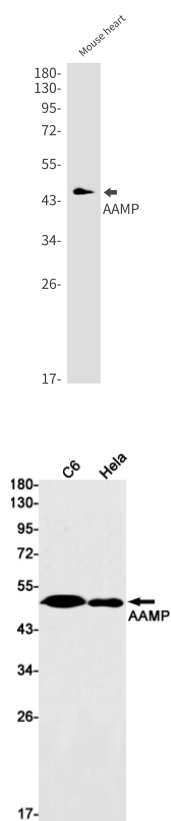
## Protein Information

---

<b>Name</b>	AAMP
<b>Function</b>	Plays a role in angiogenesis and cell migration. In smooth muscle cell migration, may act through the RhoA pathway.
<b>Cellular Location</b>	Cell membrane. Cytoplasm.
<b>Tissue Location</b>	Expressed in metastatic melanoma, liver, skin, kidney, heart, lung, lymph node, skeletal muscle and brain, and also in A2058 melanoma cells and activated T-cells (at protein level) Expressed in blood vessels. Strongly expressed in endothelial cells, cytotrophoblasts, and poorly differentiated. colon adenocarcinoma cells found in lymphatics.

## Images

---



Please note: All products are 'FOR RESEARCH USE ONLY. NOT FOR USE IN DIAGNOSTIC OR THERAPEUTIC PROCEDURES'.