

ADRM1 Rabbit mAb

Catalog # AP75040

Product Information

Application	WB, IHC-P, IHC-F, IP, ICC
Primary Accession	Q16186
Reactivity	Human
Host	Rabbit
Clonality	Monoclonal Antibody
Calculated MW	42153

Additional Information

Gene ID	11047
Other Names	ADRM1
Dilution	WB~~1/500-1/1000 IHC-P~~N/A IHC-F~~N/A IP~~N/A ICC~~N/A
Format	50mM Tris-Glycine(pH 7.4), 0.15M NaCl, 40%Glycerol, 0.01% sodium azide and 0.05% BSA.
Storage	Store at 4°C short term. Aliquot and store at -20°C long term. Avoid freeze/thaw cycles.

Protein Information

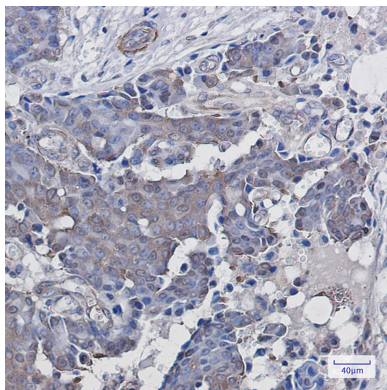
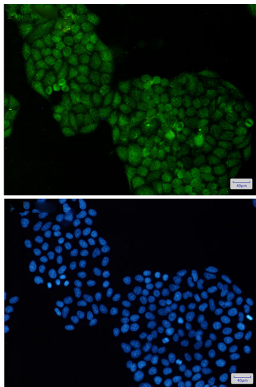
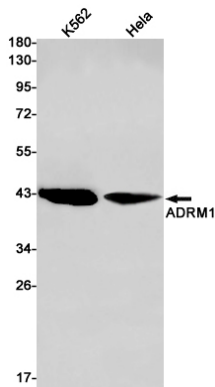
Name	ADRM1
Synonyms	GP110
Function	<p>Component of the 26S proteasome, a multiprotein complex involved in the ATP-dependent degradation of ubiquitinated proteins (PubMed:16815440, PubMed:16906146, PubMed:16990800, PubMed:17139257, PubMed:18497817, PubMed:24752541, PubMed:25702870, PubMed:25702872). This complex plays a key role in the maintenance of protein homeostasis by removing misfolded or damaged proteins, which could impair cellular functions, and by removing proteins whose functions are no longer required (PubMed:16815440, PubMed:16906146, PubMed:16990800, PubMed:17139257, PubMed:18497817, PubMed:24752541, PubMed:25702870, PubMed:25702872). Therefore, the proteasome participates in numerous cellular processes, including cell cycle progression, apoptosis, or DNA damage repair (PubMed:16815440, PubMed:16906146, PubMed:16990800, PubMed:17139257, PubMed:18497817, PubMed:24752541, PubMed:25702870, PubMed:25702872). Within the complex, functions as a proteasomal ubiquitin receptor (PubMed:18497817). Engages and activates 19S- associated</p>

deubiquitinases UCHL5 and PSMD14 during protein degradation (PubMed:[16906146](#), PubMed:[16990800](#), PubMed:[17139257](#), PubMed:[24752541](#)). UCHL5 reversibly associate with the 19S regulatory particle whereas PSMD14 is an intrinsic subunit of the proteasome lid subcomplex (PubMed:[16906146](#), PubMed:[16990800](#), PubMed:[17139257](#), PubMed:[24752541](#)).

Cellular Location

Cytoplasm. Nucleus

Images



Please note: All products are 'FOR RESEARCH USE ONLY. NOT FOR USE IN DIAGNOSTIC OR THERAPEUTIC PROCEDURES'.