

AF10 Rabbit mAb

Catalog # AP75043

Product Information

Application	WB, IHC-P, FC
Primary Accession	P55197
Reactivity	Rat, Human, Mouse
Host	Rabbit
Clonality	Monoclonal Antibody
Isotype	IgG
Conjugate	Unconjugated
Purification	Affinity Purified
Calculated MW	113320

Additional Information

Gene ID	8028
Other Names	MLLT10
Dilution	WB~~1:500-1:1000 IHC-P~~N/A FC~~1:200-1:500
Format	Liquid in 50mM Tris-Glycine(pH 7.4), 0.15M NaCl, 40%Glycerol, 0.01% sodium azide and 0.05% BSA.
Storage	Store at 4°C short term. Aliquot and store at -20°C long term. Avoid freeze/thaw cycles.

Protein Information

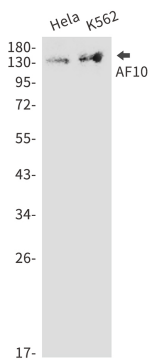
Name	MLLT10 (HGNC:16063)
Function	Probably involved in transcriptional regulation. In vitro or as fusion protein with KMT2A/MLL1 has transactivation activity. Binds to cruciform DNA. In cells, binding to unmodified histone H3 regulates DOT1L functions including histone H3 'Lys-79' dimethylation (H3K79me2) and gene activation (PubMed: 26439302).
Cellular Location	Nucleus.
Tissue Location	Expressed abundantly in testis.

Background

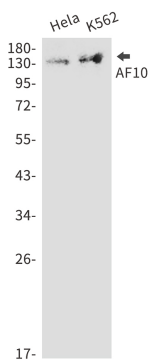
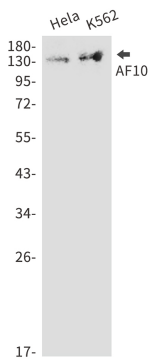
Probably involved in transcriptional regulation. In vitro or as fusion protein with KMT2A/MLL1 has

transactivation activity. Binds to cruciform DNA. In cells, binding to unmodified histone H3 regulates DOT1L functions including histone H3 'Lys-79' dimethylation (H3K79me2) and gene activation (PubMed:26439302).

Images



Western blot analysis of AF10 in HeLa, K562 lysates using AF10 antibody.



Please note: All products are 'FOR RESEARCH USE ONLY. NOT FOR USE IN DIAGNOSTIC OR THERAPEUTIC PROCEDURES'.