

# ALDOA Rabbit mAb

Catalog # AP75051

## Product Information

---

Application	WB, IHC-P, IHC-F, ICC
Primary Accession	<a href="#">P04075</a>
Reactivity	Human, Mouse, Rat
Host	Rabbit
Clonality	Monoclonal Antibody
Calculated MW	39420

## Additional Information

---

Gene ID	226
Other Names	ALDOA
Dilution	WB~~1/500-1/1000 IHC-P~~N/A IHC-F~~N/A ICC~~N/A
Format	50mM Tris-Glycine(pH 7.4), 0.15M NaCl, 40%Glycerol, 0.01% sodium azide and 0.05% BSA.
Storage	Store at 4°C short term. Aliquot and store at -20°C long term. Avoid freeze/thaw cycles.

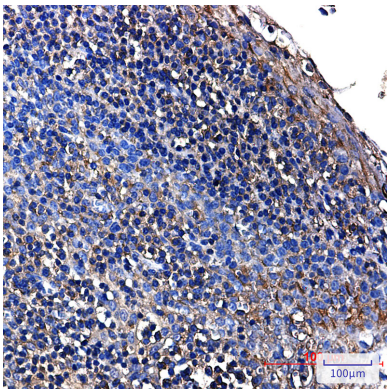
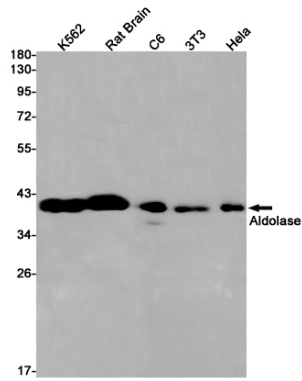
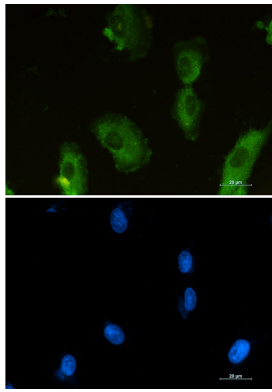
## Protein Information

---

Name	ALDOA ( <a href="#">HGNC:414</a> )
Synonyms	ALDA
Function	Catalyzes the reversible conversion of beta-D-fructose 1,6- bisphosphate (FBP) into two triose phosphate and plays a key role in glycolysis and gluconeogenesis (PubMed: <a href="#">14766013</a> ). In addition, may also function as scaffolding protein (By similarity).
Cellular Location	Cytoplasm, myofibril, sarcomere, I band {ECO:0000250 UniProtKB:P00883}. Cytoplasm, myofibril, sarcomere, M line {ECO:0000250 UniProtKB:P00883}. Note=In skeletal muscle, accumulates around the M line and within the I band, colocalizing with FBP2 on both sides of the Z line in the absence of Ca(2+) {ECO:0000250 UniProtKB:P00883}

## Images

---



Please note: All products are 'FOR RESEARCH USE ONLY. NOT FOR USE IN DIAGNOSTIC OR THERAPEUTIC PROCEDURES'.