

alpha Sarcoglycan Rabbit mAb

Catalog # AP75063

Product Information

Application	WB, IHC-P, IP
Primary Accession	Q16586
Reactivity	Rat, Human, Mouse
Host	Rabbit
Clonality	Monoclonal Antibody
Isotype	IgG
Conjugate	Unconjugated
Purification	Affinity Purified
Calculated MW	42875

Additional Information

Gene ID	6442
Other Names	SGCA
Dilution	WB~~1:1000-1:5000 IHC-P~~N/A IP~~1:20-1:50
Format	Liquid in 50mM Tris-Glycine(pH 7.4), 0.15M NaCl, 40%Glycerol, 0.01% sodium azide and 0.05% BSA.
Storage	Store at 4°C short term. Aliquot and store at -20°C long term. Avoid freeze/thaw cycles.

Protein Information

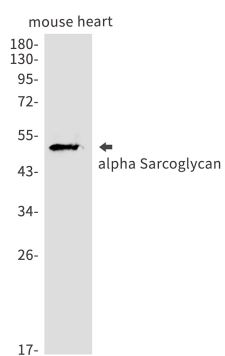
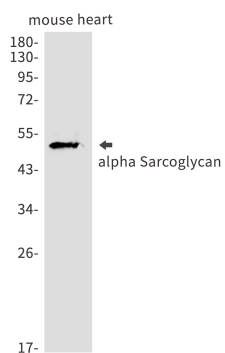
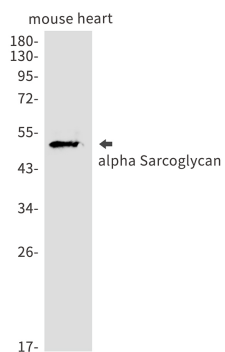
Name	SGCA
Synonyms	ADL, DAG2
Function	Component of the sarcoglycan complex, a subcomplex of the dystrophin-glycoprotein complex which forms a link between the F-actin cytoskeleton and the extracellular matrix.
Cellular Location	Cell membrane, sarcolemma; Single- pass type I membrane protein. Cytoplasm, cytoskeleton
Tissue Location	Most strongly expressed in skeletal muscle. Also expressed in cardiac muscle and, at much lower levels, in lung. In the fetus, most abundant in cardiac muscle and, at lower levels, in lung Also detected in liver and kidney. Not expressed in brain

Background

Component of the sarcoglycan complex, a subcomplex of the dystrophin-glycoprotein complex which forms a link between the F-actin cytoskeleton and the extracellular matrix.

Images

Western blot analysis of alpha Sarcoglycan in mouse heart lysates using alpha Sarcoglycan antibody.



Please note: All products are 'FOR RESEARCH USE ONLY. NOT FOR USE IN DIAGNOSTIC OR THERAPEUTIC PROCEDURES'.