

# alpha Tubulin Rabbit mAb

Catalog # AP75064

## Product Information

---

<b>Application</b>	WB, IHC-P, IF, FC, ICC
<b>Primary Accession</b>	<a href="#">P68366</a>
<b>Reactivity</b>	Rat, Human, Mouse
<b>Host</b>	Rabbit
<b>Clonality</b>	Monoclonal Antibody
<b>Isotype</b>	IgG
<b>Conjugate</b>	Unconjugated
<b>Immunogen</b>	A synthetic peptide of human alpha Tubulin
<b>Purification</b>	Affinity Purified
<b>Calculated MW</b>	49924

## Additional Information

---

<b>Gene ID</b>	7277
<b>Other Names</b>	TUBA4A
<b>Dilution</b>	WB~~1/500-1/1000 IHC-P~~N/A IF~~1/50-1/200 FC~~1:10~50 ICC~~N/A
<b>Format</b>	Liquid in 50mM Tris-Glycine(pH 7.4), 0.15M NaCl, 40%Glycerol, 0.01% sodium azide and 0.05% BSA.
<b>Storage</b>	Store at 4°C short term. Aliquot and store at -20°C long term. Avoid freeze/thaw cycles.

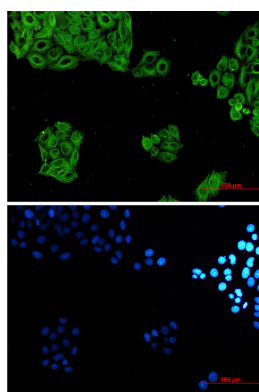
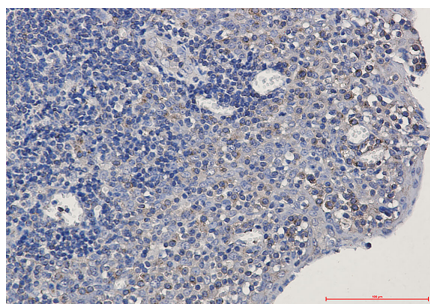
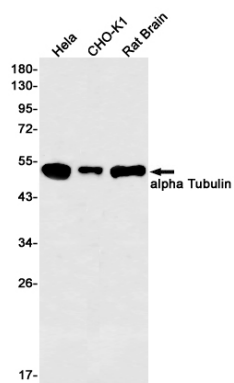
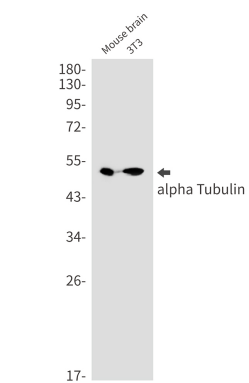
## Protein Information

---

<b>Name</b>	TUBA4A
<b>Synonyms</b>	TUBA1
<b>Function</b>	Tubulin is the major constituent of microtubules, a cylinder consisting of laterally associated linear protofilaments composed of alpha- and beta-tubulin heterodimers. Microtubules grow by the addition of GTP-tubulin dimers to the microtubule end, where a stabilizing cap forms. Below the cap, tubulin dimers are in GDP-bound state, owing to GTPase activity of alpha-tubulin.
<b>Cellular Location</b>	Cytoplasm, cytoskeleton.

## Images

---



Please note: All products are 'FOR RESEARCH USE ONLY. NOT FOR USE IN DIAGNOSTIC OR THERAPEUTIC PROCEDURES'.