

Aly Rabbit mAb

Catalog # AP75069

Product Information

Application	WB, IHC-P, IHC-F, FC, IP
Primary Accession	Q86V81
Reactivity	Rat, Human, Mouse
Host	Rabbit
Clonality	Monoclonal Antibody
Isotype	IgG
Conjugate	Unconjugated
Purification	Affinity Purified
Calculated MW	26888

Additional Information

Gene ID	10189
Other Names	ALYREF
Dilution	WB~~1:500-1:1000 IHC-P~~N/A IHC-F~~N/A FC~~1:50-1:100 IP~~1:20-1:50
Format	Liquid in 50mM Tris-Glycine(pH 7.4), 0.15M NaCl, 40%Glycerol, 0.01% sodium azide and 0.05% BSA.
Storage	Store at 4°C short term. Aliquot and store at -20°C long term. Avoid freeze/thaw cycles.

Protein Information

Name	ALYREF
Synonyms	ALY, BEF, THOC4
Function	Functions as an mRNA export adapter; component of the transcription/export (TREX) complex which is thought to couple mRNA transcription, processing and nuclear export, and specifically associates with spliced mRNA and not with unspliced pre-mRNA (PubMed: 15833825 , PubMed: 15998806 , PubMed: 17190602). TREX is recruited to spliced mRNAs by a transcription-independent mechanism, binds to mRNA upstream of the exon-junction complex (EJC) and is recruited in a splicing- and cap-dependent manner to a region near the 5' end of the mRNA where it functions in mRNA export to the cytoplasm via the TAP/NXF1 pathway (PubMed: 15833825 , PubMed: 15998806 , PubMed: 17190602). Involved in the nuclear export of intronless mRNA; proposed to be recruited to intronless mRNA by ATP-bound DDX39B (PubMed: 17984224). Plays a key role in mRNP recognition and mRNA packaging by bridging the mRNP-bound EJC and the TREX core complex

(PubMed:[37020021](#)). TREX recruitment occurs via an interaction between ALYREF/THOC4 and the cap-binding protein NCBP1 (PubMed:[15833825](#), PubMed:[15998806](#), PubMed:[17190602](#), PubMed:[37020021](#)). Required for TREX complex assembly and for linking DDX39B to the cap-binding complex (CBC) (PubMed:[15998806](#), PubMed:[17984224](#), PubMed:[37020021](#)). Binds mRNA which is thought to be transferred to the NXF1-NXT1 heterodimer for export (TAP/NXF1 pathway) (PubMed:[11675789](#), PubMed:[11707413](#), PubMed:[11979277](#), PubMed:[15833825](#), PubMed:[15998806](#), PubMed:[17190602](#), PubMed:[18364396](#), PubMed:[22144908](#), PubMed:[22893130](#), PubMed:[23222130](#), PubMed:[25662211](#)). In conjunction with THOC5 functions in NXF1-NXT1 mediated nuclear export of HSP70 mRNA; both proteins enhance the RNA binding activity of NXF1 and are required for NXF1 localization to the nuclear rim (PubMed:[19165146](#)). Involved in mRNA export of C5-methylcytosine (m5C)-containing mRNAs: specifically recognizes and binds m5C mRNAs and mediates their nucleo-cytoplasmic shuttling (PubMed:[28418038](#)). Acts as a chaperone and promotes the dimerization of transcription factors containing basic leucine zipper (bZIP) domains and thereby promotes transcriptional activation (PubMed:[10488337](#)). Involved in transcription elongation and genome stability (PubMed:[12438613](#)).

Cellular Location

Nucleus. Nucleus speckle Cytoplasm Note=Colocalizes with the core EJC, NXF1 and DDX39B in the nucleus and nuclear speckles. Travels to the cytoplasm as part of the exon junction complex (EJC) bound to mRNA (PubMed:[19324961](#)). Localizes to regions surrounding nuclear speckles known as perispeckles in which TREX complex assembly seems to occur (PubMed:[23826332](#))

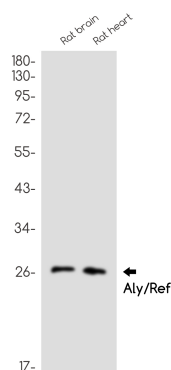
Tissue Location

Expressed in a wide variety of cancer types.

Background

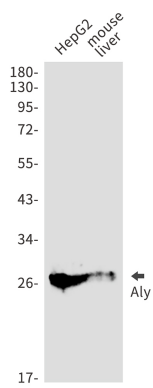
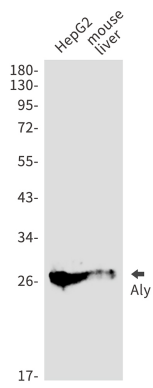
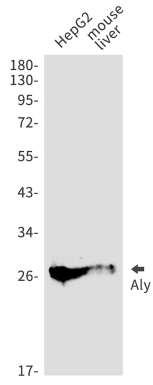
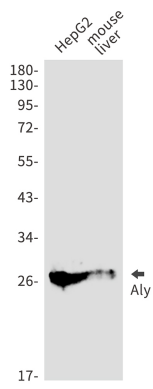
Component of the THO subcomplex of the TREX complex. The TREX complex specifically associates with spliced mRNA and not with unspliced pre-mRNA. It is recruited to spliced mRNAs by a transcription-independent mechanism. Binds to mRNA upstream of the exon-junction complex (EJC) and is recruited in a splicing- and cap-dependent manner to a region near the 5' end of the mRNA where it functions in mRNA export.

Images



Western blot analysis of Aly/Ref in rat brain, rat heart lysates using Aly antibody.

Western blot analysis of Aly/Ref in HepG2, mouse liver lysates using Aly/Ref antibody.



Please note: All products are 'FOR RESEARCH USE ONLY. NOT FOR USE IN DIAGNOSTIC OR THERAPEUTIC PROCEDURES'.