

# ERAP1 Rabbit mAb

Catalog # AP75107

## Product Information

---

Application	WB, IHC-P
Primary Accession	<a href="#">Q9NZ08</a>
Reactivity	Human, Rat
Host	Rabbit
Clonality	Monoclonal Antibody
Calculated MW	107235

## Additional Information

---

Gene ID	51752
Other Names	ERAP1
Dilution	WB~~1/500-1/1000 IHC-P~~N/A
Format	Liquid

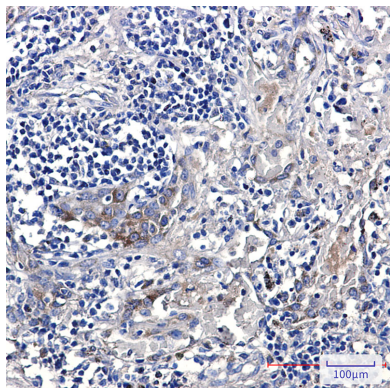
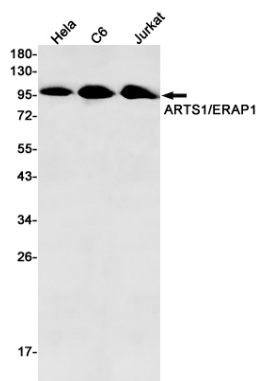
## Protein Information

---

Name	ERAP1
Synonyms	APPILS, ARTS1, KIAA0525
Function	<p>Aminopeptidase that plays a central role in peptide trimming, a step required for the generation of most HLA class I-binding peptides. Peptide trimming is essential to customize longer precursor peptides to fit them to the correct length required for presentation on MHC class I molecules. Strongly prefers substrates 9-16 residues long. Rapidly degrades 13-mer to a 9-mer and then stops. Preferentially hydrolyzes the residue Leu and peptides with a hydrophobic C-terminus, while it has weak activity toward peptides with charged C-terminus. May play a role in the inactivation of peptide hormones. May be involved in the regulation of blood pressure through the inactivation of angiotensin II and/or the generation of bradykinin in the kidney.</p>
Cellular Location	Endoplasmic reticulum membrane; Single-pass type II membrane protein
Tissue Location	Ubiquitous.

## Images

---



Please note: All products are 'FOR RESEARCH USE ONLY. NOT FOR USE IN DIAGNOSTIC OR THERAPEUTIC PROCEDURES'.