

# ASH2L Rabbit mAb

Catalog # AP75110

## Product Information

---

<b>Application</b>	WB, IHC-P, IHC-F, ICC
<b>Primary Accession</b>	<a href="#">Q9UBL3</a>
<b>Reactivity</b>	Human, Mouse, Rat
<b>Host</b>	Rabbit
<b>Clonality</b>	Monoclonal Antibody
<b>Calculated MW</b>	68723

## Additional Information

---

<b>Gene ID</b>	9070
<b>Other Names</b>	ASH2L
<b>Dilution</b>	WB~~1/500-1/1000 IHC-P~~N/A IHC-F~~N/A ICC~~N/A
<b>Format</b>	50mM Tris-Glycine(pH 7.4), 0.15M NaCl, 40%Glycerol, 0.01% sodium azide and 0.05% BSA.
<b>Storage</b>	Store at 4°C short term. Aliquot and store at -20°C long term. Avoid freeze/thaw cycles.

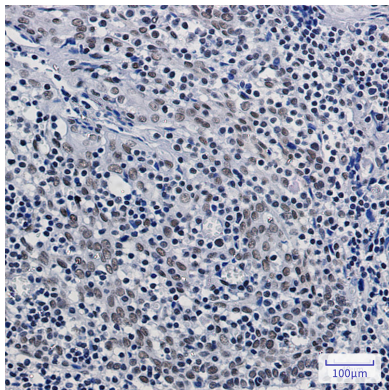
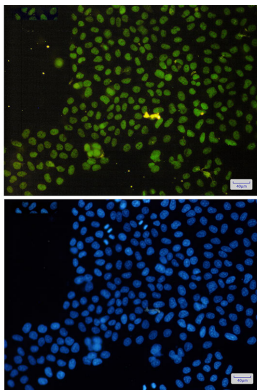
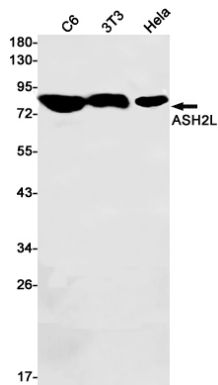
## Protein Information

---

<b>Name</b>	ASH2L
<b>Synonyms</b>	ASH2L1
<b>Function</b>	Transcriptional regulator (PubMed: <a href="#">12670868</a> ). Component or associated component of some histone methyltransferase complexes which regulates transcription through recruitment of those complexes to gene promoters (PubMed: <a href="#">19131338</a> ). Component of the Set1/Ash2 histone methyltransferase (HMT) complex, a complex that specifically methylates 'Lys-4' of histone H3, but not if the neighboring 'Lys-9' residue is already methylated (PubMed: <a href="#">19556245</a> ). As part of the MLL1/MLL complex it is involved in methylation and dimethylation at 'Lys-4' of histone H3 (PubMed: <a href="#">19556245</a> ). May play a role in hematopoiesis (PubMed: <a href="#">12670868</a> ). In association with RBBP5 and WDR5, stimulates the histone methyltransferase activities of KMT2A, KMT2B, KMT2C, KMT2D, SETD1A and SETD1B (PubMed: <a href="#">21220120</a> , PubMed: <a href="#">22266653</a> ).
<b>Cellular Location</b>	Nucleus.
<b>Tissue Location</b>	Ubiquitously expressed. Predominantly expressed in adult heart and testis

and fetal lung and liver, with barely detectable expression in adult lung, liver, kidney, prostate, and peripheral leukocytes.

## Images



Please note: All products are 'FOR RESEARCH USE ONLY. NOT FOR USE IN DIAGNOSTIC OR THERAPEUTIC PROCEDURES'.