

ASS1 Rabbit mAb

Catalog # AP75113

Product Information

Application	WB, IHC-P, IHC-F, FC, IP
Primary Accession	P00966
Reactivity	Rat, Human, Mouse
Host	Rabbit
Clonality	Monoclonal Antibody
Isotype	IgG
Conjugate	Unconjugated
Purification	Affinity Purified
Calculated MW	46530

Additional Information

Gene ID	445
Other Names	ASS1
Dilution	WB~~1:1000-1:5000 IHC-P~~N/A IHC-F~~N/A FC~~1:50-1:100 IP~~1:10-1:100
Format	Liquid in 50mM Tris-Glycine(pH 7.4), 0.15M NaCl, 40%Glycerol, 0.01% sodium azide and 0.05% BSA.
Storage	Store at 4°C short term. Aliquot and store at -20°C long term. Avoid freeze/thaw cycles.

Protein Information

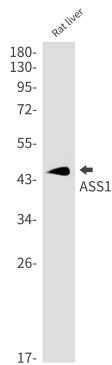
Name	ASS1 (HGNC:758)
Function	One of the enzymes of the urea cycle, the metabolic pathway transforming neurotoxic amonia produced by protein catabolism into inocuous urea in the liver of ureotelic animals. Catalyzes the formation of arginosuccinate from aspartate, citrulline and ATP and together with ASL it is responsible for the biosynthesis of arginine in most body tissues.
Cellular Location	Cytoplasm, cytosol
Tissue Location	Expressed in adult liver.

Background

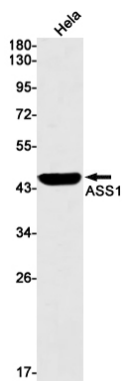
Amino-acid biosynthesis; L-arginine biosynthesis; L-arginine from L-ornithine and carbamoyl phosphate:

step 2/3. Nitrogen metabolism; urea cycle; (N(omega)-L-arginino)succinate from L-aspartate and L-citrulline:
step 1/1.

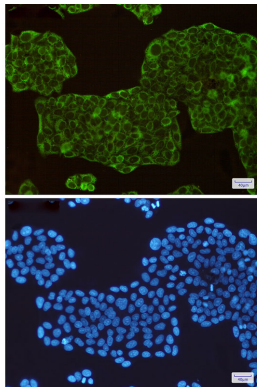
Images



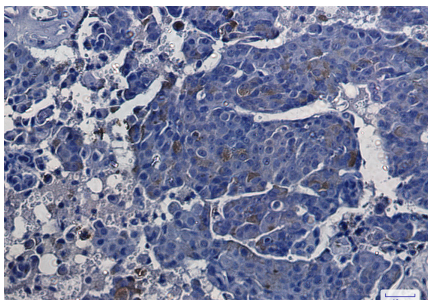
Western blot analysis of ASS1 in rat liver lysates using ASS1 antibody.



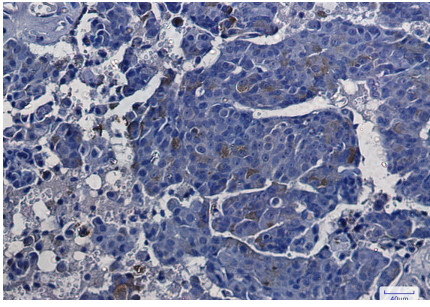
Western blot analysis of ASS1 in HeLa lysates using ASS1 antibody.



Immunocytochemistry analysis of ASS1(green) in HeLa using ASS1 antibody, and DAPI(blue)



Immunohistochemistry analysis of paraffin-embedded Human breast cancer using ASS1 antibody. High-pressure and temperature Sodium Citrate pH 6.0 was used for antigen retrieval.



Please note: All products are 'FOR RESEARCH USE ONLY. NOT FOR USE IN DIAGNOSTIC OR THERAPEUTIC PROCEDURES'.