

AZI2 Rabbit mAb

Catalog # AP75135

Product Information

| | |
|-------------------|------------------------|
| Application | WB |
| Primary Accession | Q9H6S1 |
| Reactivity | Human, Rat |
| Host | Rabbit |
| Clonality | Monoclonal Antibody |
| Calculated MW | 44935 |

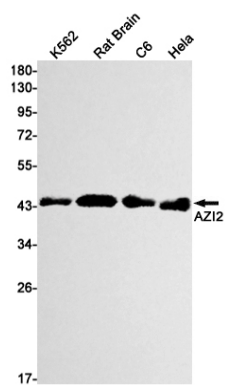
Additional Information

| | |
|-------------|--|
| Gene ID | 64343 |
| Other Names | AZI2 |
| Dilution | WB~~1/500-1/1000 |
| Format | 50mM Tris-Glycine(pH 7.4), 0.15M NaCl, 40%Glycerol, 0.01% sodium azide and 0.05% BSA. |
| Storage | Store at 4°C short term. Aliquot and store at -20°C long term. Avoid freeze/thaw cycles. |

Protein Information

| | |
|-------------------|---|
| Name | AZI2 |
| Synonyms | NAP1 {ECO:0000303 PubMed:14560022}, TBKB |
| Function | Adapter protein which binds TBK1 and IKBKE playing a role in antiviral innate immunity (PubMed: 14560022 , PubMed: 21931631). Activates serine/threonine-protein kinase TBK1 and facilitates its oligomerization (PubMed: 14560022 , PubMed: 21931631). Enhances the phosphorylation of NF-kappa-B p65 subunit RELA by TBK1 (PubMed: 14560022 , PubMed: 21931631). Promotes TBK1-induced as well as TNF-alpha or PMA-induced activation of NF-kappa-B (PubMed: 14560022 , PubMed: 21931631). Participates in IFNB promoter activation via TICAM1 (PubMed: 15611223). |
| Cellular Location | Cytoplasm. |
| Tissue Location | Widely expressed (PubMed:14560022). Abundant expression seen in the pancreas and testis (PubMed:14560022) |

Images



Please note: All products are 'FOR RESEARCH USE ONLY. NOT FOR USE IN DIAGNOSTIC OR THERAPEUTIC PROCEDURES'.