

B7H4 Rabbit mAb

Catalog # AP75136

Product Information

Application	WB, IHC-P, IHC-F
Primary Accession	Q7Z7D3
Reactivity	Human
Host	Rabbit
Clonality	Monoclonal Antibody
Isotype	IgG
Conjugate	Unconjugated
Purification	Affinity Purified
Calculated MW	30878

Additional Information

Gene ID	79679
Other Names	VTCN1
Dilution	WB~~1:500-1:1000 IHC-P~~N/A IHC-F~~N/A
Format	Liquid in 50mM Tris-Glycine(pH 7.4), 0.15M NaCl, 40%Glycerol, 0.01% sodium azide and 0.05% BSA.
Storage	Store at 4°C short term. Aliquot and store at -20°C long term. Avoid freeze/thaw cycles.

Protein Information

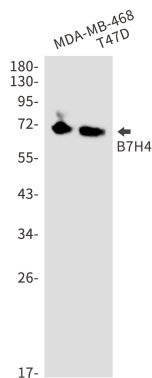
Name	VTCN1 {ECO:0000312 EMBL:EAW56672.1}
Function	Negatively regulates T-cell-mediated immune response by inhibiting T-cell activation, proliferation, cytokine production and development of cytotoxicity. When expressed on the cell surface of tumor macrophages, plays an important role, together with regulatory T- cells (Treg), in the suppression of tumor-associated antigen-specific T-cell immunity. Involved in promoting epithelial cell transformation.
Cellular Location	Cell membrane; Single-pass type I membrane protein. Note=Expressed at the cell surface. A soluble form has also been detected. {ECO:0000255, ECO:0000269 PubMed:12818165, ECO:0000269 PubMed:15878339, ECO:0000269 PubMed:16782226}
Tissue Location	Overexpressed in breast, ovarian, endometrial, renal cell (RCC) and non-small-cell lung cancers (NSCLC). Expressed on activated T- and B-cells, monocytes and dendritic cells, but not expressed in most normal tissues (at

protein level). Widely expressed, including in kidney, liver, lung, ovary, placenta, spleen and testis

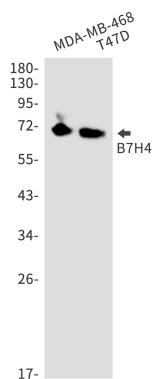
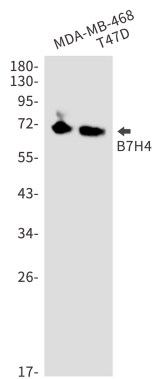
Background

This gene encodes a protein belonging to the B7 costimulatory protein family. Proteins in this family are present on the surface of antigen-presenting cells and interact with ligand bound to receptors on the surface of T cells. Studies have shown that high levels of the encoded protein has been correlated with tumor progression. A pseudogene of this gene is located on chromosome 20. Multiple transcript variants encoding different isoforms have been found for this gene.

Images



Western blot analysis of B7H4 in MDA-MB-468, T47D lysates using B7H4 antibody.



Please note: All products are 'FOR RESEARCH USE ONLY. NOT FOR USE IN DIAGNOSTIC OR THERAPEUTIC PROCEDURES'.