

Band 3 Rabbit mAb

Catalog # AP75144

Product Information

Application	WB
Primary Accession	P02730
Reactivity	Human, Mouse
Host	Rabbit
Clonality	Monoclonal Antibody
Calculated MW	101792

Additional Information

Gene ID	6521
Other Names	SLC4A1
Dilution	WB~~1/500-1/1000
Format	50mM Tris-Glycine(pH 7.4), 0.15M NaCl, 40%Glycerol, 0.01% sodium azide and 0.05% BSA.
Storage	Store at 4°C short term. Aliquot and store at -20°C long term. Avoid freeze/thaw cycles.

Protein Information

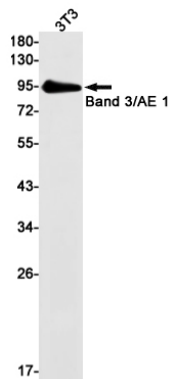
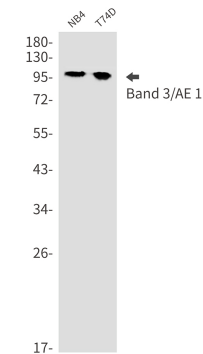
Name	SLC4A1 (HGNC:11027)
Synonyms	AE1, DI, EPB3
Function	Functions both as a transporter that mediates electroneutral anion exchange across the cell membrane and as a structural protein (PubMed: 10926824 , PubMed: 14734552 , PubMed: 1538405 , PubMed: 16227998 , PubMed: 20151848 , PubMed: 24121512 , PubMed: 28387307 , PubMed: 35835865). Component of the ankyrin-1 complex of the erythrocyte membrane; required for normal flexibility and stability of the erythrocyte membrane and for normal erythrocyte shape via the interactions of its cytoplasmic domain with cytoskeletal proteins, glycolytic enzymes, and hemoglobin (PubMed: 1538405 , PubMed: 20151848 , PubMed: 35835865). Functions as a transporter that mediates the 1:1 exchange of inorganic anions across the erythrocyte membrane. Mediates chloride-bicarbonate exchange in the kidney, and is required for normal acidification of the urine (PubMed: 10926824 , PubMed: 14734552 , PubMed: 16227998 , PubMed: 24121512 , PubMed: 28387307).
Cellular Location	Cell membrane; Multi-pass membrane protein. Basolateral cell membrane;

Multi-pass membrane protein. Note=Detected in the erythrocyte cell membrane and on the basolateral membrane of alpha-intercalated cells in the collecting duct in the kidney.

Tissue Location

Detected in erythrocytes (at protein level).

Images



Please note: All products are 'FOR RESEARCH USE ONLY. NOT FOR USE IN DIAGNOSTIC OR THERAPEUTIC PROCEDURES'.