

# beta 2 Microglobulin Rabbit mAb

Catalog # AP75151

## Product Information

---

<b>Application</b>	WB, IP
<b>Primary Accession</b>	<a href="#">P61769</a>
<b>Reactivity</b>	Human, Mouse, Rat
<b>Host</b>	Rabbit
<b>Clonality</b>	Monoclonal Antibody
<b>Calculated MW</b>	13715

## Additional Information

---

<b>Gene ID</b>	567
<b>Other Names</b>	B2M
<b>Dilution</b>	WB~~1/500-1/1000 IP~~1/20
<b>Format</b>	Liquid

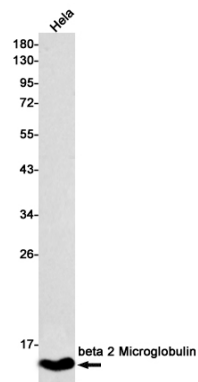
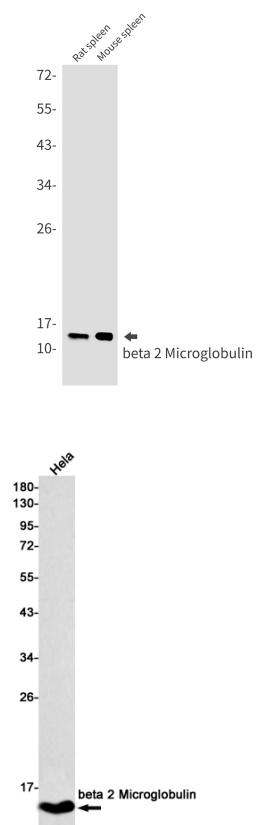
## Protein Information

---

<b>Name</b>	B2M ( <a href="#">HGNC:914</a> )
<b>Function</b>	Component of the class I major histocompatibility complex (MHC). Involved in the presentation of peptide antigens to the immune system. Exogenously applied M.tuberculosis EsxA or EsxA-EsxB (or EsxA expressed in host) binds B2M and decreases its export to the cell surface (total protein levels do not change), probably leading to defects in class I antigen presentation (PubMed: <a href="#">25356553</a> ).
<b>Cellular Location</b>	Secreted. Cell surface. Note=Detected in serum and urine (PubMed:1336137, PubMed:7554280). {ECO:0000269 PubMed:7554280, ECO:0000269 Ref.6}

## Images

---



Please note: All products are 'FOR RESEARCH USE ONLY. NOT FOR USE IN DIAGNOSTIC OR THERAPEUTIC PROCEDURES'.