

# CDC7 (CDC7L1) Antibody (N-term)

Purified Rabbit Polyclonal Antibody (Pab)

Catalog # AP7515a

## Product Information

---

Application	WB, E
Primary Accession	<a href="#">O00311</a>
Reactivity	Human
Host	Rabbit
Clonality	Polyclonal
Isotype	Rabbit IgG
Calculated MW	63888
Antigen Region	1-30

## Additional Information

---

Gene ID	8317
Other Names	Cell division cycle 7-related protein kinase, CDC7-related kinase, HsCdc7, huCdc7, CDC7, CDC7L1
Target/Specificity	This CDC7 (CDC7L1) antibody is generated from rabbits immunized with a KLH conjugated synthetic peptide between 1-30 amino acids from the N-terminal region of human CDC7 (CDC7L1).
Dilution	WB~~1:1000 E~~Use at an assay dependent concentration.
Format	Purified polyclonal antibody supplied in PBS with 0.09% (W/V) sodium azide. This antibody is prepared by Saturated Ammonium Sulfate (SAS) precipitation followed by dialysis against PBS.
Storage	Maintain refrigerated at 2-8°C for up to 2 weeks. For long term storage store at -20°C in small aliquots to prevent freeze-thaw cycles.
Precautions	CDC7 (CDC7L1) Antibody (N-term) is for research use only and not for use in diagnostic or therapeutic procedures.

## Protein Information

---

Name	CDC7 ( <a href="#">HGNC:1745</a> )
Synonyms	CDC7L1
Function	Kinase involved in initiation of DNA replication. Phosphorylates critical substrates that regulate the G1/S phase transition and initiation of DNA replication, such as MCM proteins and CLASPIN.

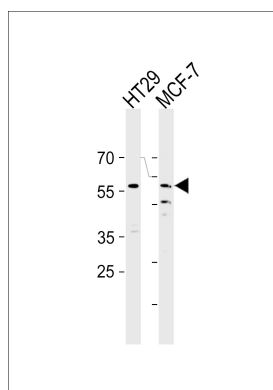
## Background

CDC7L1 is predominantly localized in the nucleus and is a cell division cycle protein with kinase activity. Although expression levels of the protein appear to be constant throughout the cell cycle, the protein kinase activity appears to increase during S phase. It has been suggested that the protein is essential for initiation of DNA replication and that it plays a role in regulating cell cycle progression. Overexpression of this gene product may be associated with neoplastic transformation for some tumors.

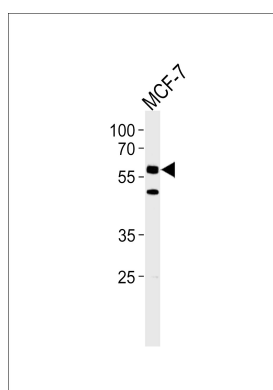
## References

Montagnoli, A., et al., EMBO J. 21(12):3171-3181 (2002).  
Hess, G.F., et al., Gene 211(1):133-140 (1998).  
Jiang, W., et al., Proc. Natl. Acad. Sci. U.S.A. 94(26):14320-14325 (1997).  
Sato, N., et al., EMBO J. 16(14):4340-4351 (1997).

## Images



HCDC7L1 Antibody (M9) (Cat. #AP7515a) western blot analysis in HT29, MCF-7 cell line lysates (35ug/lane). This demonstrates the HCDC7L1 antibody detected the HCDC7L1 protein (arrow).



HCDC7L1 Antibody (M9) (Cat. #AP7515a) western blot analysis in MCF-7 cell line lysates (35ug/lane). This demonstrates the HCDC7L1 antibody detected the HCDC7L1 protein (arrow).

Please note: All products are 'FOR RESEARCH USE ONLY. NOT FOR USE IN DIAGNOSTIC OR THERAPEUTIC PROCEDURES'.