

Casein Kinase 1 alpha Rabbit mAb

Catalog # AP75189

Product Information

| | |
|--------------------------|------------------------|
| Application | WB, IP |
| Primary Accession | P48729 |
| Reactivity | Human, Rat |
| Host | Rabbit |
| Clonality | Monoclonal Antibody |
| Calculated MW | 38915 |

Additional Information

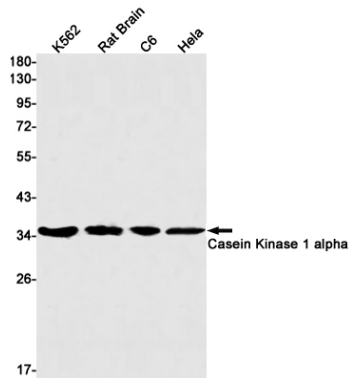
| | |
|--------------------|--|
| Gene ID | 1452 |
| Other Names | CSNK1A1 |
| Dilution | WB~~1/500-1/1000 IP~~N/A |
| Format | 50mM Tris-Glycine(pH 7.4), 0.15M NaCl, 40%Glycerol, 0.01% sodium azide and 0.05% BSA. |
| Storage | Store at 4°C short term. Aliquot and store at -20°C long term. Avoid freeze/thaw cycles. |

Protein Information

| | |
|--------------------------|---|
| Name | CSNK1A1 |
| Function | Casein kinases are operationally defined by their preferential utilization of acidic proteins such as caseins as substrates (PubMed: 11955436 , PubMed: 1409656 , PubMed: 18305108 , PubMed: 23902688). It can phosphorylate a large number of proteins (PubMed: 11955436 , PubMed: 1409656 , PubMed: 18305108 , PubMed: 23902688). Participates in Wnt signaling (PubMed: 11955436). Phosphorylates CTNNB1 at 'Ser-45' (PubMed: 11955436). May phosphorylate PER1 and PER2 (By similarity). May play a role in segregating chromosomes during mitosis (PubMed: 1409656). May play a role in keratin cytoskeleton disassembly and thereby, it may regulate epithelial cell migration (PubMed: 23902688). Acts as a positive regulator of mTORC1 and mTORC2 signaling in response to nutrients by mediating phosphorylation of DEPTOR inhibitor (PubMed: 22017875 , PubMed: 22017877). Acts as an inhibitor of NLRP3 inflammasome assembly by mediating phosphorylation of NLRP3 (By similarity). |
| Cellular Location | Cytoplasm. Cytoplasm, cytoskeleton, microtubule organizing center, centrosome. Chromosome, centromere, kinetochore. Nucleus speckle. Cytoplasm, cytoskeleton, cilium basal body |

{ECO:0000250|UniProtKB:Q8BK63}. Cytoplasm, cytoskeleton, spindle
{ECO:0000250|UniProtKB:Q8BK63}. Note=Localizes to the centrosome in
interphase cells, and to kinetochore fibers during mitosis. Also recruited to
the keratin cytoskeleton (PubMed:23902688)

Images



Please note: All products are 'FOR RESEARCH USE ONLY. NOT FOR USE IN DIAGNOSTIC OR THERAPEUTIC PROCEDURES'.