

# Cathelicidin Rabbit mAb

Catalog # AP75201

## Product Information

---

Application	WB, IHC-P, IP
Primary Accession	<a href="#">P49913</a>
Reactivity	Human
Host	Rabbit
Clonality	Monoclonal Antibody
Calculated MW	19301

## Additional Information

---

Gene ID	820
Other Names	CAMP
Dilution	WB~~1/500-1/1000 IHC-P~~N/A IP~~N/A
Format	50mM Tris-Glycine(pH 7.4), 0.15M NaCl, 40%Glycerol, 0.01% sodium azide and 0.05% BSA.
Storage	Store at 4°C short term. Aliquot and store at -20°C long term. Avoid freeze/thaw cycles.

## Protein Information

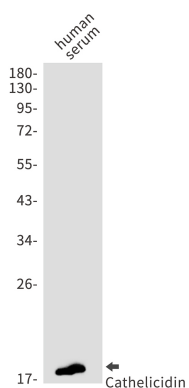
---

Name	CAMP ( <a href="#">HGNC:1472</a> )
Function	Antimicrobial protein that is an integral component of the innate immune system (PubMed: <a href="#">14978112</a> , PubMed: <a href="#">16637646</a> , PubMed: <a href="#">18818205</a> , PubMed: <a href="#">22879591</a> , PubMed: <a href="#">9736536</a> ). Binds to bacterial lipopolysaccharides (LPS) (PubMed: <a href="#">16637646</a> , PubMed: <a href="#">18818205</a> ). Acts via neutrophil N-formyl peptide receptors to enhance the release of CXCL2 (PubMed: <a href="#">22879591</a> ). Postsecretory processing generates multiple cathelicidin antimicrobial peptides with various lengths which act as a topical antimicrobial defense in sweat on skin (PubMed: <a href="#">14978112</a> ). The unprocessed precursor form, cathelicidin antimicrobial peptide, inhibits the growth of Gram-negative E.coli and E.aerogenes with efficiencies comparable to that of the mature peptide LL-37 (in vitro) (PubMed: <a href="#">9736536</a> ).
Cellular Location	Secreted. Vesicle. Note=Stored as pro-peptide in granules and phagolysosomes of neutrophils (PubMed:7529412, PubMed:9736536). Secreted in sweat onto skin (PubMed:14978112).
Tissue Location	Expressed in neutrophilic granulocytes (at protein level) (PubMed:7529412, PubMed:7615076, PubMed:7890387, PubMed:8681941, PubMed:8946956,

PubMed:9736536). Expressed in bone marrow (PubMed:7890387).  
[Antibacterial peptide FALL-39]: Expressed in bone marrow and testis.

## Images

---



Please note: All products are 'FOR RESEARCH USE ONLY. NOT FOR USE IN DIAGNOSTIC OR THERAPEUTIC PROCEDURES'.