

Caveolin-2 Rabbit mAb

Catalog # AP75204

Product Information

Application	WB, IHC-P, FC
Primary Accession	P51636
Reactivity	Human
Host	Rabbit
Clonality	Monoclonal Antibody
Isotype	IgG
Conjugate	Unconjugated
Purification	Affinity Purified
Calculated MW	18291

Additional Information

Gene ID	858
Other Names	CAV2
Dilution	WB~~1:1000-1:5000 IHC-P~~N/A FC~~1:200-1:2000
Format	Liquid in 50mM Tris-Glycine(pH 7.4), 0.15M NaCl, 40%Glycerol, 0.01% sodium azide and 0.05% BSA.
Storage	Store at 4°C short term. Aliquot and store at -20°C long term. Avoid freeze/thaw cycles.

Protein Information

Name	CAV2
Function	May act as a scaffolding protein within caveolar membranes. Interacts directly with G-protein alpha subunits and can functionally regulate their activity. Acts as an accessory protein in conjunction with CAV1 in targeting to lipid rafts and driving caveolae formation. The Ser-36 phosphorylated form has a role in modulating mitosis in endothelial cells. Positive regulator of cellular mitogenesis of the MAPK signaling pathway. Required for the insulin-stimulated nuclear translocation and activation of MAPK1 and STAT3, and the subsequent regulation of cell cycle progression (By similarity).
Cellular Location	Nucleus. Cytoplasm. Golgi apparatus membrane; Peripheral membrane protein. Cell membrane; Peripheral membrane protein. Membrane, caveola; Peripheral membrane protein. Note=Potential hairpin-like structure in the membrane. Membrane protein of caveolae Tyr-19-phosphorylated form is enriched at sites of cell-cell contact and is translocated to the nucleus in complex with MAPK1 in response to insulin (By similarity).

Tyr-27-phosphorylated form is located both in the cytoplasm and plasma membrane. CAV1-mediated Ser-23-phosphorylated form locates to the plasma membrane. Ser-36-phosphorylated form resides in intracellular compartments.

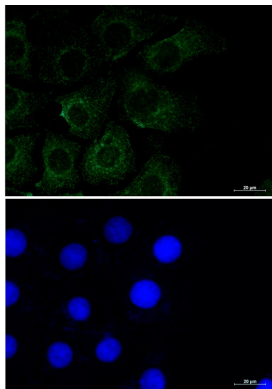
Tissue Location

Expressed in endothelial cells, smooth muscle cells, skeletal myoblasts and fibroblasts

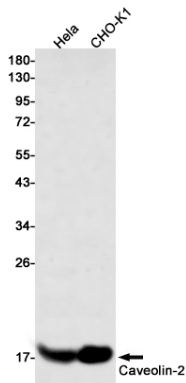
Background

May act as a scaffolding protein within caveolar membranes. Interacts directly with G-protein alpha subunits and can functionally regulate their activity. Acts as an accessory protein in conjunction with CAV1 in targeting to lipid rafts and driving caveolae formation.

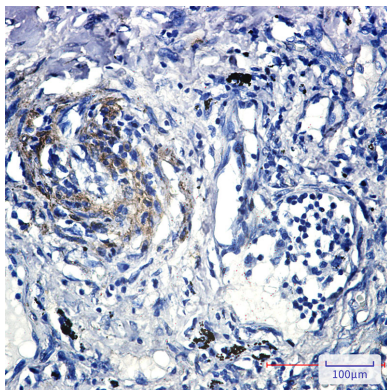
Images



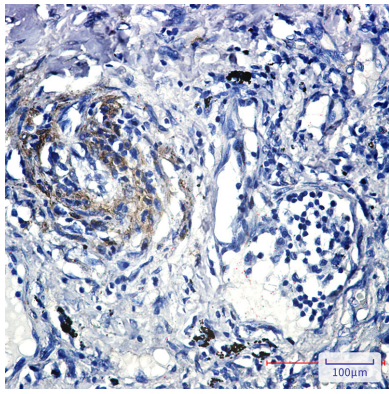
Immunocytochemistry analysis of Caveolin 2 (green) in A549 using Caveolin 2 antibody, and DAPI (blue).



Western blot analysis of Caveolin2 in HeLa, CHO-K1 lysates using Caveolin2 antibody.



Immunohistochemistry analysis of paraffin-embedded Human lung cancer tissue using Caveolin2 antibody. High-pressure and temperature Sodium Citrate pH 6.0 was used for antigen retrieval.



Please note: All products are 'FOR RESEARCH USE ONLY. NOT FOR USE IN DIAGNOSTIC OR THERAPEUTIC PROCEDURES'.