

CD226 Rabbit mAb

Catalog # AP75216

Product Information

Application	WB
Primary Accession	Q15762
Reactivity	Human
Host	Rabbit
Clonality	Monoclonal Antibody
Calculated MW	38614

Additional Information

Gene ID	10666
Other Names	CD226
Dilution	WB~~1/500-1/1000
Format	50mM Tris-Glycine(pH 7.4), 0.15M NaCl, 40%Glycerol, 0.01% sodium azide and 0.05% BSA.
Storage	Store at 4°C short term. Aliquot and store at -20°C long term. Avoid freeze/thaw cycles.

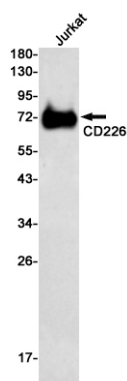
Protein Information

Name	CD226
Synonyms	DNAM1
Function	<p>Cell surface receptor that plays an important role in the immune system, particularly in intercellular adhesion, lymphocyte signaling, cytotoxicity and lymphokine secretion mediated by cytotoxic T-cells and NK cells (PubMed:8673704, PubMed:9712030). Functions as a costimulatory receptor upon recognition of target cells, such as virus- infected or tumor cells. Upon binding to its ligands PVR/CD155 or NECTIN2/CD112 on target cells, promotes the cytotoxic activity of NK cells and CTLs, enhancing their ability to kill these cells (PubMed:26755705, PubMed:31253644, PubMed:30591568).</p> <p>Mechanistically, phosphorylation by Src kinases such as LYN of FYN, enables binding to adapter GRB2, leading to activation of VAV1, PI3K and PLCG1. Promotes also activation of kinases ERK and AKT, as well as calcium fluxes (By similarity).</p>
Cellular Location	Cell membrane; Single-pass type I membrane protein. Note=Localizes to lipid rafts.

Tissue Location

Expressed by peripheral blood T-lymphocytes.

Images



Please note: All products are 'FOR RESEARCH USE ONLY. NOT FOR USE IN DIAGNOSTIC OR THERAPEUTIC PROCEDURES'.