

# CDC7 Rabbit mAb

Catalog # AP75241

## Product Information

---

<b>Application</b>	WB, IP
<b>Primary Accession</b>	<a href="#">O00311</a>
<b>Reactivity</b>	Human, Hamster
<b>Host</b>	Rabbit
<b>Clonality</b>	Monoclonal Antibody
<b>Calculated MW</b>	63888

## Additional Information

---

<b>Gene ID</b>	8317
<b>Other Names</b>	CDC7
<b>Dilution</b>	WB~~1/500-1/1000 IP~~N/A
<b>Format</b>	50mM Tris-Glycine(pH 7.4), 0.15M NaCl, 40%Glycerol, 0.01% sodium azide and 0.05% BSA.
<b>Storage</b>	Store at 4°C short term. Aliquot and store at -20°C long term. Avoid freeze/thaw cycles.

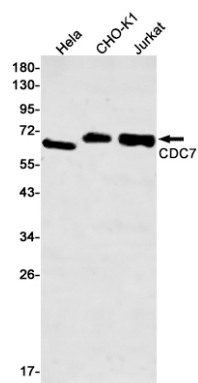
## Protein Information

---

<b>Name</b>	CDC7 ( <a href="#">HGNC:1745</a> )
<b>Synonyms</b>	CDC7L1
<b>Function</b>	Kinase involved in initiation of DNA replication. Phosphorylates critical substrates that regulate the G1/S phase transition and initiation of DNA replication, such as MCM proteins and CLASPIN.
<b>Cellular Location</b>	Nucleus.

## Images

---



Please note: All products are 'FOR RESEARCH USE ONLY. NOT FOR USE IN DIAGNOSTIC OR THERAPEUTIC PROCEDURES'.