

# Cleaved-PARP1 Rabbit mAb

Catalog # AP75270

## Product Information

---

<b>Application</b>	WB, FC, IP
<b>Primary Accession</b>	<a href="#">P09874</a>
<b>Reactivity</b>	Human
<b>Host</b>	Rabbit
<b>Clonality</b>	Monoclonal Antibody
<b>Isotype</b>	IgG
<b>Conjugate</b>	Unconjugated
<b>Purification</b>	Affinity Purified
<b>Calculated MW</b>	113 KDa

## Additional Information

---

<b>Other Names</b>	PARP1
<b>Dilution</b>	WB~~1:500-1:1000 FC~~1:20-1:50 IP~~1:20-1:50
<b>Format</b>	Liquid in 50mM Tris-Glycine(pH 7.4), 0.15M NaCl, 40%Glycerol, 0.01% sodium azide and 0.05% BSA.
<b>Storage</b>	Store at 4°C short term. Aliquot and store at -20°C long term. Avoid freeze/thaw cycles.

## Protein Information

---

### Background

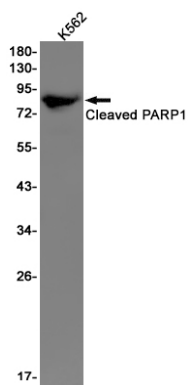
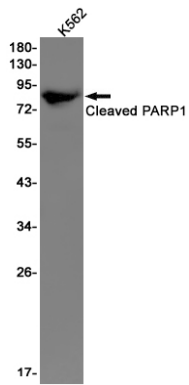
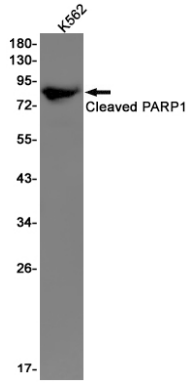
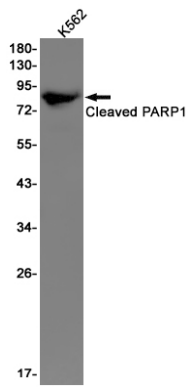
---

Involved in the base excision repair (BER) pathway, by catalyzing the poly(ADP-ribosyl)ation of a limited number of acceptor proteins involved in chromatin architecture and in DNA metabolism. This modification follows DNA damages and appears as an obligatory step in a detection/signaling pathway leading to the reparation of DNA strand breaks.

### Images

---

Western blot analysis of Cleaved- PARP1 in K562 lysates using Cleaved-PARP1 antibody.



Please note: All products are 'FOR RESEARCH USE ONLY. NOT FOR USE IN DIAGNOSTIC OR THERAPEUTIC PROCEDURES'.