

Phospho-Cytokeratin 8 (Ser23) Rabbit mAb

Catalog # AP75334

Product Information

Application	WB, IHC-P, IHC-F, IP, ICC
Primary Accession	P05787
Reactivity	Human
Host	Rabbit
Clonality	Monoclonal Antibody
Calculated MW	53704

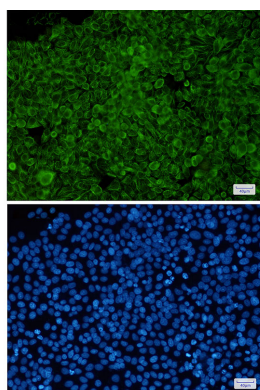
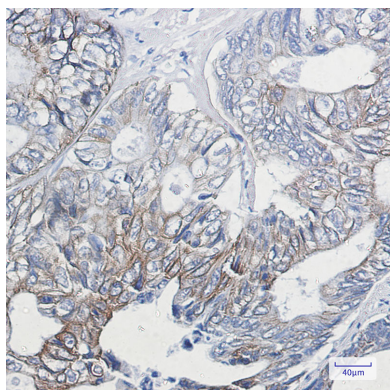
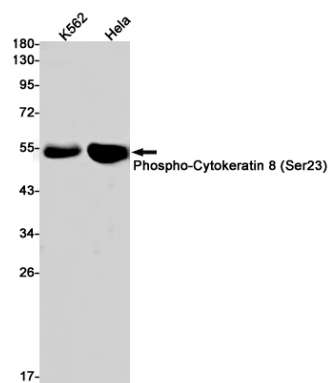
Additional Information

Gene ID	3856
Other Names	KRT8
Dilution	WB~~1/500-1/1000 IHC-P~~N/A IHC-F~~N/A IP~~N/A ICC~~N/A
Format	Liquid

Protein Information

Name	KRT8
Synonyms	CYK8
Function	Together with KRT19, helps to link the contractile apparatus to dystrophin at the costameres of striated muscle.
Cellular Location	Cytoplasm. Nucleus, nucleoplasm {ECO:0000250 UniProtKB:Q10758}. Nucleus matrix {ECO:0000250 UniProtKB:Q10758}
Tissue Location	Observed in muscle fibers accumulating in the costameres of myoplasm at the sarcolemma membrane in structures that contain dystrophin and spectrin. Expressed in gingival mucosa and hard palate of the oral cavity.

Images



Please note: All products are 'FOR RESEARCH USE ONLY. NOT FOR USE IN DIAGNOSTIC OR THERAPEUTIC PROCEDURES'.