

GSDME Rabbit mAb

Catalog # AP75353

Product Information

Application	WB, IP
Primary Accession	O60443
Reactivity	Human
Host	Rabbit
Clonality	Monoclonal Antibody
Calculated MW	54555

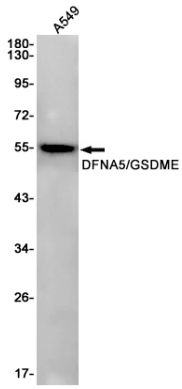
Additional Information

Gene ID	1687
Other Names	GSDME
Dilution	WB~~1/500-1/1000 IP~~N/A
Format	50mM Tris-Glycine(pH 7.4), 0.15M NaCl, 40%Glycerol, 0.01% sodium azide and 0.05% BSA.
Storage	Store at 4°C short term. Aliquot and store at -20°C long term. Avoid freeze/thaw cycles.

Protein Information

Name	GSDME {ECO:0000303 PubMed:28459430, ECO:0000312 HGNC:HGNC:2810}
Function	[Gasdermin-E]: Precursor of a pore-forming protein that converts non-inflammatory apoptosis to pyroptosis (PubMed: 27281216 , PubMed: 28459430 , PubMed: 33852854 , PubMed: 35594856 , PubMed: 36607699). This form constitutes the precursor of the pore-forming protein: upon cleavage, the released N-terminal moiety (Gasdermin-E, N-terminal) binds to membranes and forms pores, triggering pyroptosis (PubMed: 28459430).
Cellular Location	[Gasdermin-E, N-terminal]: Cell membrane; Multi-pass membrane protein {ECO:0000250 UniProtKB:Q5Y4Y6}
Tissue Location	Expressed in cochlea (PubMed:9771715). Low level of expression in heart, brain, placenta, lung, liver, skeletal muscle, kidney and pancreas, with highest expression in placenta (PubMed:9771715).

Images



Please note: All products are 'FOR RESEARCH USE ONLY. NOT FOR USE IN DIAGNOSTIC OR THERAPEUTIC PROCEDURES'.