

DHX8 Rabbit mAb

Catalog # AP75357

Product Information

| | |
|--------------------------|------------------------|
| Application | WB, ICC |
| Primary Accession | Q14562 |
| Reactivity | Human |
| Host | Rabbit |
| Clonality | Monoclonal Antibody |
| Calculated MW | 139315 |

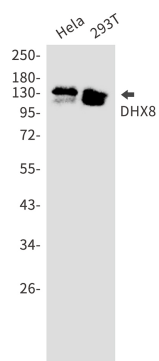
Additional Information

| | |
|--------------------|--|
| Gene ID | 1659 |
| Other Names | DHX8 |
| Dilution | WB~~1/500-1/1000 ICC~~N/A |
| Format | 50mM Tris-Glycine(pH 7.4), 0.15M NaCl, 40%Glycerol, 0.01% sodium azide and 0.05% BSA. |
| Storage | Store at 4°C short term. Aliquot and store at -20°C long term. Avoid freeze/thaw cycles. |

Protein Information

| | |
|--------------------------|---|
| Name | DHX8 |
| Synonyms | DDX8 |
| Function | Involved in pre-mRNA splicing as component of the spliceosome (PubMed: 11991638 , PubMed: 28076346 , PubMed: 28502770). Facilitates nuclear export of spliced mRNA by releasing the RNA from the spliceosome (PubMed: 8608946). |
| Cellular Location | Nucleus |
| Tissue Location | Expressed in skin, cervix and nerve. Also expressed in the brain. |

Images



Please note: All products are 'FOR RESEARCH USE ONLY. NOT FOR USE IN DIAGNOSTIC OR THERAPEUTIC PROCEDURES'.