

ELMO1 Rabbit mAb

Catalog # AP75396

Product Information

Application	WB, FC, IP
Primary Accession	Q92556
Reactivity	Rat, Human, Mouse
Host	Rabbit
Clonality	Monoclonal Antibody
Isotype	IgG
Conjugate	Unconjugated
Purification	Affinity Purified
Calculated MW	83829

Additional Information

Gene ID	9844
Other Names	ELMO1
Dilution	WB~~1:1000-1:5000 FC~~1:100-1:200 IP~~1:10-1:100
Format	Liquid in 50mM Tris-Glycine(pH 7.4), 0.15M NaCl, 40%Glycerol, 0.01% sodium azide and 0.05% BSA.
Storage	Store at 4°C short term. Aliquot and store at -20°C long term. Avoid freeze/thaw cycles.

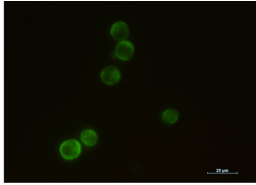
Protein Information

Name	ELMO1
Synonyms	KIAA0281
Function	Involved in cytoskeletal rearrangements required for phagocytosis of apoptotic cells and cell motility. Acts in association with DOCK1 and CRK. Was initially proposed to be required in complex with DOCK1 to activate Rac Rho small GTPases. May enhance the guanine nucleotide exchange factor (GEF) activity of DOCK1.
Cellular Location	Cytoplasm. Cell membrane. Note=Translocation to plasma membrane seems to be mediated by DOCK1 and CRK
Tissue Location	Widely expressed, with a higher expression in the spleen and placenta

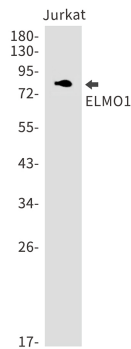
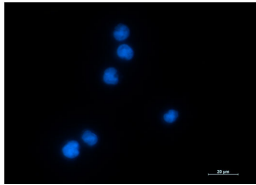
Background

Involved in cytoskeletal rearrangements required for phagocytosis of apoptotic cells and cell motility. Acts in association with DOCK1 and CRK.

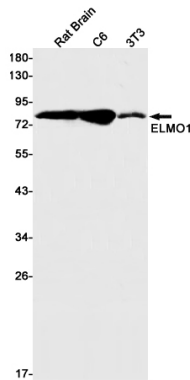
Images



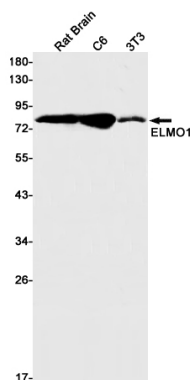
Immunocytochemistry analysis of ELMO1 (green) in Jurkat using ELMO1 antibody, and DAPI (blue).



Western blot analysis of ELMO1 in Jurkat lysates using ELMO1 antibody.



Western blot analysis of ELMO1 in rat Brain, C6, 3T3 lysates using ELMO1 antibody



Please note: All products are 'FOR RESEARCH USE ONLY. NOT FOR USE IN DIAGNOSTIC OR THERAPEUTIC PROCEDURES'.