

# EPS15R Rabbit mAb

Catalog # AP75407

## Product Information

---

<b>Application</b>	WB, IP
<b>Primary Accession</b>	<a href="#">Q9UBC2</a>
<b>Reactivity</b>	Human
<b>Host</b>	Rabbit
<b>Clonality</b>	Monoclonal Antibody
<b>Calculated MW</b>	94255

## Additional Information

---

<b>Gene ID</b>	58513
<b>Other Names</b>	EPS15L1
<b>Dilution</b>	WB~~1/500-1/1000 IP~~N/A
<b>Format</b>	50mM Tris-Glycine(pH 7.4), 0.15M NaCl, 40%Glycerol, 0.01% sodium azide and 0.05% BSA.

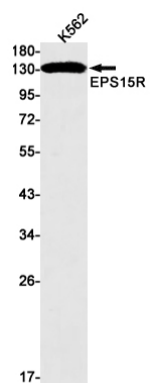
## Protein Information

---

<b>Name</b>	EPS15L1
<b>Synonyms</b>	EPS15R
<b>Function</b>	Seems to be a constitutive component of clathrin-coated pits that is required for receptor-mediated endocytosis. Involved in endocytosis of integrin beta-1 (ITGB1) and transferrin receptor (TFR); internalization of ITGB1 as DAB2-dependent cargo but not TFR seems to require association with DAB2.
<b>Cellular Location</b>	Cell membrane; Peripheral membrane protein. Nucleus. Membrane, coated pit. Note=Localized to plasma membrane coated pits

## Images

---



Please note: All products are 'FOR RESEARCH USE ONLY. NOT FOR USE IN DIAGNOSTIC OR THERAPEUTIC PROCEDURES'.