

# EWSR1 Rabbit mAb

Catalog # AP75414

## Product Information

---

<b>Application</b>	WB, IHC-P
<b>Primary Accession</b>	<a href="#">Q01844</a>
<b>Reactivity</b>	Rat, Human, Mouse
<b>Host</b>	Rabbit
<b>Clonality</b>	Monoclonal Antibody
<b>Isotype</b>	IgG
<b>Conjugate</b>	Unconjugated
<b>Purification</b>	Affinity Purified
<b>Calculated MW</b>	68478

## Additional Information

---

<b>Gene ID</b>	2130
<b>Other Names</b>	EWSR1
<b>Dilution</b>	WB~~1:1000-1:5000 IHC-P~~N/A
<b>Format</b>	Liquid in 50mM Tris-Glycine(pH 7.4), 0.15M NaCl, 40%Glycerol, 0.01% sodium azide and 0.05% BSA.
<b>Storage</b>	Store at 4°C short term. Aliquot and store at -20°C long term. Avoid freeze/thaw cycles.

## Protein Information

---

<b>Name</b>	EWSR1
<b>Synonyms</b>	EWS
<b>Function</b>	Binds to ssRNA containing the consensus sequence 5'-AGGUAA-3' (PubMed: <a href="#">21256132</a> ). Might normally function as a transcriptional repressor (PubMed: <a href="#">10767297</a> ). EWS-fusion-proteins (EFPS) may play a role in the tumorigenic process. They may disturb gene expression by mimicking, or interfering with the normal function of CTD-POLII within the transcription initiation complex. They may also contribute to an aberrant activation of the fusion protein target genes.
<b>Cellular Location</b>	Nucleus. Cytoplasm. Cell membrane. Note=Relocates from cytoplasm to ribosomes upon PTK2B/FAK2 activation
<b>Tissue Location</b>	Ubiquitous.

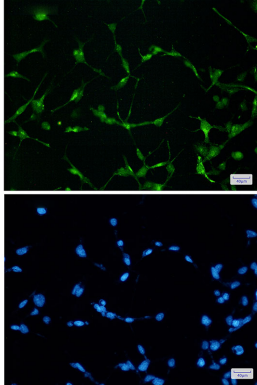
## Background

---

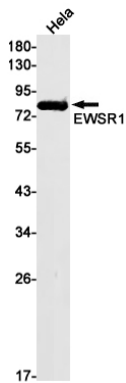
Might normally function as a repressor. EWS-fusion-proteins (EFPS) may play a role in the tumorigenic process. They may disturb gene expression by mimicking, or interfering with the normal function of CTD-POLII within the transcription initiation complex.

## Images

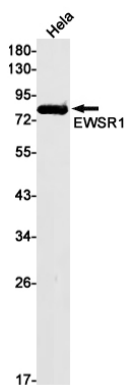
---



Immunocytochemistry analysis of EWSR1 (green) in 293t using EWSR1 antibody, and DAPI (blue).



Western blot analysis of EWSR1 in HeLa lysates using EWSR1 antibody.



Please note: All products are 'FOR RESEARCH USE ONLY. NOT FOR USE IN DIAGNOSTIC OR THERAPEUTIC PROCEDURES'.